



Dial

| Article No | ∅ | H | Finish |
|-------------|----|----|-------------|
| EZ 2078 028 | 28 | 25 | Matt Chrome |
| EZ 2078 033 | 33 | 28 | Matt Chrome |



Ringo

| Article No | ∅ | H | Finish |
|-------------|----|----|-------------|
| EZ 2002 035 | 35 | 26 | Matt Chrome |



Axel

| Article No | L | H | Finish |
|-------------|----|----|-------------|
| EZ 2003 037 | 37 | 26 | Matt Chrome |



One

| Article No | ∅ | H | Finish |
|-----------------|----|----|----------------|
| VF 0169 015 Z23 | 15 | 23 | Brushed Nickel |

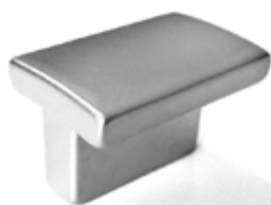


Mir

| Article No | ∅ | H | Finish |
|-------------|----|----|-------------|
| EZ 2042 017 | 17 | 23 | Matt Chrome |

Luna

| Article No | ∅ | H | Finish |
|-------------|----|----|-------------|
| EZ 2040 017 | 17 | 28 | Matt Chrome |



Estela

| Article No | ∅ | L | W | Finish |
|-------------|----|----|----|-------------|
| EZ 2076 030 | 16 | 30 | 20 | Matt Chrome |



Cube

| Article No | ∅ | L | W | Finish |
|-------------|----|----|----|-------------|
| EZ 2079 044 | 16 | 44 | 27 | Matt Chrome |

Escudo

| Article No | ∅ | L | W | Finish |
|-------------|----|----|----|-------------|
| EZ 2074 034 | 16 | 34 | 31 | Matt Chrome |



Tab

| Article No | L | W | Finish |
|-------------|----|----|-------------|
| EA 4001 040 | 41 | 20 | Matt Chrome |



Bin

| Article No | ∅ | H | Finish |
|-----------------|----|----|-----------------|
| VF 0097 015 L01 | 28 | 25 | Polished Chrome |
| VF 0097 020 L01 | 33 | 28 | Polished Chrome |
| VF 0097 015 L21 | 28 | 25 | Brushed Chrome |
| VF 0097 020 L21 | 33 | 28 | Brushed Chrome |

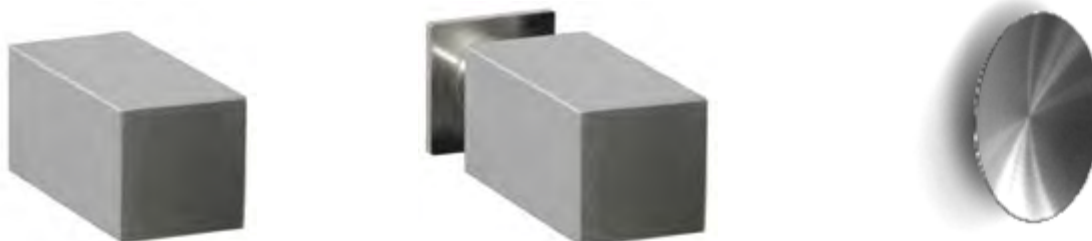


Ribbed Pull

| Article No | ∅ | H | Finish |
|------------|----|----|-------------|
| M 478 710 | 35 | 26 | Matt Chrome |



| Article No | \varnothing | H | Finish | Article No | \varnothing | H | Finish | Article No | \varnothing | H | Finish |
|------------|---------------|----|-----------------|------------|---------------|----|-----------------|-------------|---------------|----|-----------------|
| DH 33515 | 15 | 32 | Stainless Steel | DH 33715 | 15 | 32 | Stainless Steel | EI 2001 030 | 30 | 22 | Stainless Steel |
| DH 33520 | 20 | 37 | Stainless Steel | DH 33720 | 20 | 37 | Stainless Steel | EI 2001 035 | 35 | 24 | Stainless Steel |

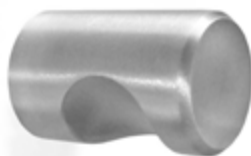


| Article No | \varnothing | H | Finish | Article No | \varnothing | H | Finish | Article No | \varnothing | H | Finish |
|------------|---------------|----|-----------------|------------|---------------|----|-----------------|--|---------------|----------------|--------|
| DH 34015 | 15 | 25 | Stainless Steel | DH 34115 | 15 | 30 | Stainless Steel | Tango FH 4032.040.10 FH 4032.030.10 | | | |
| | | | | | | | | | | | |
| | | | | | | | | 30 | 12 | Brushed Nickel | |



Chocolate

| Article No | \varnothing | H | Finish |
|--------------|---------------|----|-----------------|
| PT 533260024 | 24 | 26 | Polished Chrome |



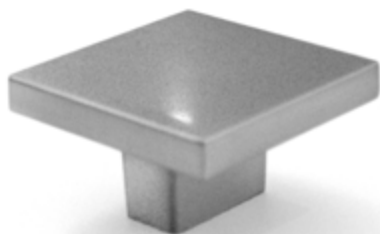
Tornado

| Article No | \varnothing | H | Finish |
|----------------|---------------|----|-----------------|
| FH 1001.012.01 | 12 | 25 | Stainless Steel |
| FH 1001.020.01 | 20 | 30 | Stainless Steel |



Turn

| Article No | \varnothing | H | Finish |
|----------------|---------------|----|----------------|
| FH 4031.030.10 | 30 | 14 | Brushed Nickel |



Lotus

| Article No | \varnothing | $\frac{C-C}{\varnothing}$ | H | Finish |
|----------------|---------------|---------------------------|----|----------------|
| FH 4026.016.10 | 16 | 45 | 25 | Brushed Nickel |
| FH 4026.016.75 | 16 | 45 | 25 | Black |



Square

| Article No | \varnothing | L | W | Finish |
|-----------------|---------------|----|----|-------------|
| VF 0065 016 Z11 | 16 | 44 | 35 | Matt Chrome |



Acer

| Article No | \varnothing | H | Finish |
|-----------------|---------------|----|-----------------|
| VF 0035 018 S25 | 18 | 23 | Stainless Steel |
| VF 0035 023 S25 | 23 | 25 | Stainless Steel |
| VF 0035 028 S25 | 28 | 27 | Stainless Steel |



Domo

| Article No | ∇ | H | ⊕ | ⊕ | Finish |
|--------------------|----|------|----|---|--------------|
| VF 0294 016 V09 F1 | 50 | 30.5 | 16 | | Black/Clear |
| VF 0294 016 V09 F2 | 50 | 30.5 | 16 | | Black/Grey |
| VF 0294 016 V23 F1 | 50 | 30.5 | 16 | | Nickel/Clear |
| VF 0294 016 V23 F2 | 50 | 30.5 | 16 | | Nickel/Grey |

Anilla

| Article No | ∅ | H | ⊕ | ⊕ | Finish |
|---------------|----|----|----|---|---------------|
| VF 0093 016 B | 15 | 32 | 16 | | Acrylic Black |
| VF 0093 016 W | 20 | 37 | 16 | | Acrylic White |

Piramidal

| Article No | ∇ | H | ⊕ | ⊕ | Finish |
|---------------|----|----|----|---|---------------|
| VF 0100 016 B | 70 | 18 | 16 | | Acrylic Black |
| VF 0100 016 W | 70 | 18 | 16 | | Acrylic White |



Quattro

| Article No | ∇ | H | Finish |
|---------------|----|----|--------------|
| VF 0007 028 B | 28 | 19 | Nickel/Black |
| VF 0007 028 W | 28 | 19 | Nickel/White |
| VF 0007 035 B | 35 | 24 | Nickel/Black |
| VF 0007 035 W | 35 | 24 | Nickel/White |

Piston

| Article No | ∅ | H | Finish |
|---------------|----|----|--------------|
| VF 0009 035 B | 35 | 30 | Nickel/Black |
| VF 0009 035 W | 35 | 30 | Nickel/White |

Monza

| Article No | ∇ | H | ⊕ | ⊕ | Finish |
|---------------|----|----|----|---|---------------|
| VF 0099 016 B | 70 | 29 | 16 | | Acrylic Black |
| VF 0099 016 W | 70 | 29 | 16 | | Acrylic White |



Classic

| Article No | ∅ | H | Finish |
|------------------|----|----|----------------|
| PT 536460 034 66 | 33 | 22 | Brushed Nickel |
| PT 536460 034 23 | 33 | 22 | Antique Brown |

Zapa

| Article No | L | W | H | Finish |
|-----------------|----|----|------|-----------------|
| VF 0315 020 Z01 | 20 | 45 | 19.5 | Polished Chrome |
| VF 0315 020 Z11 | 20 | 45 | 19.5 | Matt Chrome |
| VF 0315 020 Z23 | 20 | 45 | 19.5 | Brushed Nickel |

Coffee Pot

| Article No | ∅ | H | Finish |
|-----------------|----|----|-----------------|
| VF 0041 025 Z01 | 28 | 23 | Polished Chrome |
| VF 0041 025 ZM2 | 28 | 23 | Matt Black |



Opale

| Article No | ⊕ | ⊕ | L | H | Finish |
|----------------|----|----|----|---|---------------|
| VF 0120 038 W | 16 | 38 | 20 | | White Acrylic |
| VF 0120 055 W | 16 | 55 | 25 | | White Acrylic |
| VF 0120 038 BL | 16 | 38 | 20 | | Black Acrylic |
| VF 0120 055 BL | 16 | 55 | 25 | | Black Acrylic |

Bead

| Article No | ∅ | H | Finish |
|--------------|----|----|--------|
| PT 536860028 | 28 | 38 | Black |



Core

| Article No | $\frac{C-C}{\oplus \ominus}$ | L | H | W | Finish | Comment |
|---------------|------------------------------|-----|------|----|---------------|---------|
| VF 0074 032 B | 32 | 61 | 14.5 | 33 | Black Acrylic | |
| VF 0074 096 B | 96 | 125 | 14.5 | 33 | Black Acrylic | |
| VF 0074 032 W | 32 | 61 | 14.5 | 33 | White Acrylic | |
| VF 0074 096 W | 96 | 125 | 14.5 | 33 | White Acrylic | |



Myra

| Article No | $\frac{C-C}{\oplus \ominus}$ | L | H | W | Finish | Comment |
|--------------------|------------------------------|-----|----|----|---------------------|---------|
| VF 0337 096 A02 01 | 96 | 122 | 17 | 22 | Black/White Acrylic | |
| VF 0337 192 A02 01 | 192 | 218 | 17 | 22 | Black/White Acrylic | |



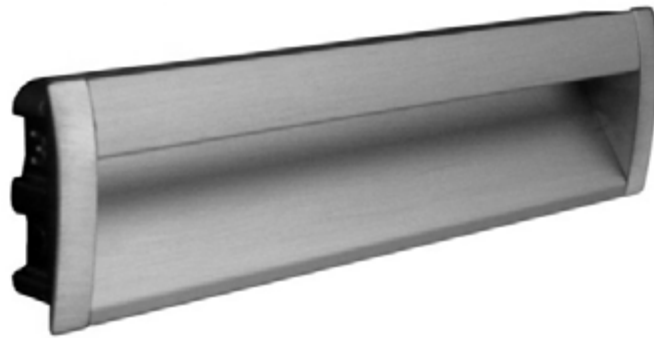
Barcco

| Article No | $\frac{C-C}{\oplus \ominus}$ | L | H | W | Finish | Comment |
|-----------------|------------------------------|-----|----|----|-----------|-------------------------------------|
| VF 0340 200 W18 | 160 | 200 | 33 | 18 | Ash clear | Also available in dark stained ash. |
| VF 0340 400 W18 | 320 | 400 | 33 | 18 | Ash clear | |
| VF 0340 600 W18 | 320/480 | 600 | 33 | 18 | Ash clear | |
| VF 0340 200 W00 | 160 | 200 | 33 | 18 | Beech raw | |
| VF 0340 400 W00 | 320 | 400 | 33 | 18 | Beech raw | |



Eos

| Article No | C-C | L | H | W | Finish | Comment |
|----------------|---------|-------|-------|-------|--------------------|---------------------------------|
| EK 5001 160 | 160 | 170 | 4 | 41 | Anodised Aluminium | Contact Katalog about oversize. |
| EK 5001 320 | 160 | 330 | 4 | 41 | Anodised Aluminium | |
| EK 5001 160 67 | 160 | 170 | 4 | 41 | Brushed Nickel | |
| EK 5001 320 67 | 160 | 330 | 4 | 41 | Brushed Nickel | |



Midas

| Article No | C-C | L | H | W | Finish | Comment |
|----------------|---------|-------|-------|-------|--------------------|---------------------------------|
| EK 5002 160 | 160 | 170 | 4 | 41 | Anodised Aluminium | Contact Katalog about oversize. |
| EK 5002 320 | 320 | 330 | 4 | 41 | Anodised Aluminium | |
| EK 5002 160 67 | 160 | 170 | 4 | 41 | Brushed Nickel | |
| EK 5002 320 67 | 320 | 330 | 4 | 41 | Brushed Nickel | |



Box

| Article No | C-C | L | H | W | Finish |
|-------------|---------|-------|-------|-------|--------------------|
| VF 0066 064 | 64 | 102 | 2 | 62 | Anodised Aluminium |
| VF 0066 160 | 160 | 198 | 2 | 62 | Anodised Aluminium |



| Article No | ϕ - ϕ | L | H | W | Finish | Comment |
|-------------|-----------------|-----|---|----|-------------|---------|
| EZ 5012 160 | 160 | 176 | 3 | 55 | Matt Chrome | |

Kova



| Article No | ϕ - ϕ | L | H | W | Finish | Comment |
|-------------|-----------------|-----|---|----|-------------|---------|
| EZ 5013 160 | 160 | 170 | 3 | 55 | Matt Chrome | |

Kiper



| Article No | ϕ - ϕ | L | H | W | Finish | Comment |
|-------------|-----------------|-----|---|----|-------------|---------|
| EZ 5010 128 | 128 | 160 | 5 | 51 | Matt Chrome | |

Post



Onda

| Article No | C-C ⊕ ⊕ | L ≡≡≡ | H ←→ I | W ⊓ | Finish | Comment |
|-------------|------------|----------|-----------|--------|------------------|---|
| EZ 4057 096 | 96 | 108 | 9 | 35 | Matt Chrome Look | Matt Chrome Look is a powder coat finish. |
| EZ 4057 160 | 160 | 171 | 9 | 52 | Matt Chrome Look | |



Surim

| Article No | C-C ⊕ ⊕ | L ≡≡≡ | H ←→ I | W ⊓ | Finish | Comment |
|-------------|------------|----------|-----------|--------|------------------|---|
| EZ 4036 096 | 96 | 109 | 1 | 24 | Matt Chrome Look | Matt Chrome look is a powder coat finish. |
| EZ 4036 160 | 160 | 170 | 2 | 41 | | |



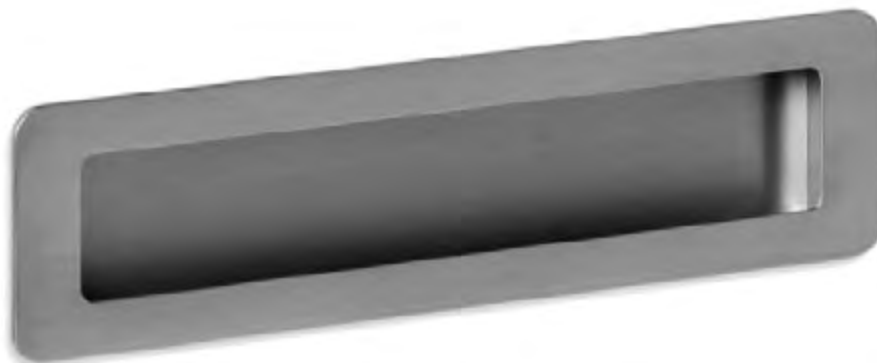
| Article No | C-C | L | H | W | Finish |
|-------------|-----|-----|---|----|----------------|
| VF 0119 160 | 160 | 173 | 4 | 45 | Brushed Nickel |

Wave



| Article No | C-C | L | H | W | Finish |
|-------------------|-----|-------|------|------|----------------|
| VF 0281 160 Z01ST | 160 | 174.8 | 16.3 | 48.5 | Brushed Nickel |

Flat



| Article No | C-C | L | H | W | Finish |
|-----------------|-----|-----|------|----|----------------|
| VF 0243 192 Z23 | 192 | 206 | 13.5 | 52 | Brushed Nickel |

Low



Hide

| Article No | C-C | L | H | W | Finish | Comment |
|------------------|-----|-----|----|----|--------|---------|
| PT 515560 064 66 | 64 | 112 | 20 | 15 | Nickel | |
| PT 515560 128 66 | 128 | 200 | 20 | 15 | Nickel | |



Back edge recess

| Article No | C-C | L | H | W | Finish |
|------------------|-----|-----|------|------|--------|
| EZ 4090 180 67 V | 128 | 180 | 17.5 | 16.5 | Nickel |
| EZ 4090 090 67v | 64 | 90 | 17.5 | 16.5 | Nickel |



| Article No | C-C | L | H | W | Finish | Comments |
|------------------|-----|-----|----|----|----------------|---------------------------|
| PT 535260 128 66 | 128 | 200 | 25 | 17 | Brushed Nickel | Front edge recess handle. |

Hide Deep



Edge Straight

| Article No | $\frac{C-C}{\oplus \ominus}$ | L | H | W | Finish | Comment |
|---------------|------------------------------|-----|----|----|----------------|---|
| PT 419720 200 | 20 | 40 | 18 | 41 | Brushed Nickel | Also available in new colours antique brown, rose gold and new brass. |
| PT 419720 200 | 2x80 | 200 | 18 | 41 | Brushed Nickel | |
| PT 419720 350 | 2x160 | 350 | 18 | 41 | Brushed Nickel | |



Edge Round

| Article No | $\frac{C-C}{\oplus \ominus}$ | L | H | W | Finish | Comment |
|---------------|------------------------------|-----|----|----|----------------|---------|
| PT 419920 040 | 20 | 40 | 18 | 41 | Brushed Nickel | |
| PT 419920 200 | 2x80 | 200 | 18 | 41 | Brushed Nickel | |
| PT 419920 350 | 2x160 | 350 | 18 | 41 | Brushed Nickel | |



in - 350

| Article No | $\frac{C-C}{\oplus \ominus}$ | L | H | W | Finish | Comment |
|------------|------------------------------|-----|-----|----|-----------------|---------|
| DH 35005 | 16 | 32 | 9.5 | 40 | Stainless Steel | |
| DH 35015 | 64 | 96 | 9.5 | 40 | Stainless Steel | |
| DH 35030 | 160 | 192 | 9.5 | 40 | Stainless Steel | |
| DH 35055 | 256 | 352 | 9.5 | 40 | Stainless Steel | |
| DH 35085 | 352 | 544 | 9.5 | 40 | Stainless Steel | |



in - 360

| Article No | $\overset{c-c}{\oplus}$ | $\overset{L}{\parallel}$ | $\overset{H}{\parallel}$ | $\overset{W}{\parallel}$ | Finish | Comment |
|------------|-------------------------|--------------------------|--------------------------|--------------------------|-----------------|---------|
| DH 360 05 | 16 | 32 | 15 | 40 | Stainless Steel | |
| DH 360 15 | 64 | 96 | 15 | 40 | Stainless Steel | |
| DH 360 30 | 160 | 192 | 15 | 40 | Stainless Steel | |



in - 370

| Article No | $\overset{c-c}{\oplus}$ | $\overset{L}{\parallel}$ | $\overset{H}{\parallel}$ | $\overset{W}{\parallel}$ | Finish | Comment |
|------------|-------------------------|--------------------------|--------------------------|--------------------------|-----------------|---------|
| DH 370 05 | 16 | 32 | 16 | 40 | Stainless Steel | |
| DH 370 15 | 64 | 96 | 16 | 40 | Stainless Steel | |
| DH 370 30 | 160 | 192 | 16 | 40 | Stainless Steel | |



in - 380

| Article No | $\overset{c-c}{\oplus}$ | $\overset{L}{\parallel}$ | $\overset{H}{\parallel}$ | $\overset{W}{\parallel}$ | Finish | Comment |
|------------|-------------------------|--------------------------|--------------------------|--------------------------|-----------------|---------|
| DH 380 05 | 16 | 32 | 48 | 40 | Stainless Steel | |



Zenith

| Article No | C-C | L | H | W | Finish | Comment |
|-------------|-----|-----|---|----|-------------|---|
| EZ 4081 016 | 16 | 32 | 5 | 35 | Matt Chrome | Also available in Brushed Nickel and Polished Chrome. |
| EZ 4081 064 | 64 | 96 | 5 | 35 | Matt Chrome | |
| EZ 4081 128 | 128 | 160 | 5 | 35 | Matt Chrome | |



Kimera

| Article No | C-C | L | H | W | Finish | Comment |
|----------------|-----|-----|----|----|--------------------|---------|
| EW 4022 160 | 160 | 169 | 34 | 20 | Anodised Aluminium | |
| EW 4022 160 67 | 160 | 169 | 34 | 20 | Brushed Nickel | |



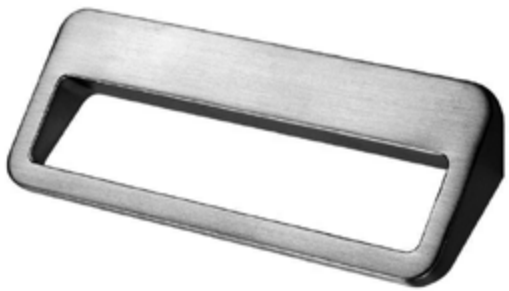
Wow

| Article No | C-C | L | H | W | Finish |
|---------------|-----|-----|----|----|----------------|
| PT 534660 064 | 64 | 96 | 20 | 42 | Brushed Nickel |
| PT 534660 160 | 160 | 192 | 20 | 42 | Brushed Nickel |



Zeus

| Article No | C-C | L | H | W | Finish |
|-------------|-----|-----|----|----|-------------|
| EZ 4075 160 | 160 | 168 | 18 | 45 | Matt Chrome |



| Article No | ϕ - ϕ | L | H | W | Finish |
|------------------|-----------------|-----|----|----|----------------|
| PT 516360 032 66 | 32 | 50 | 43 | 30 | Brushed Nickel |
| PT 516360 128 66 | 128 | 136 | 43 | 30 | Brushed Nickel |

Front



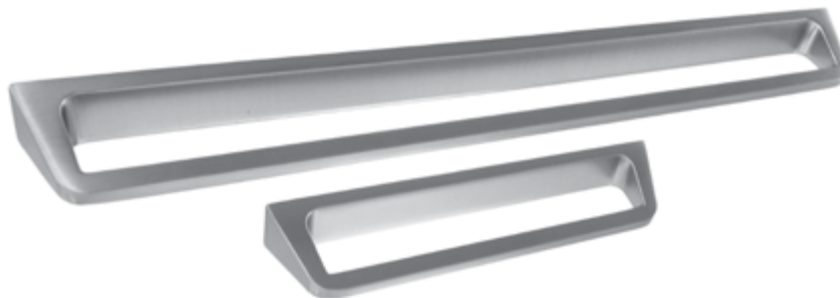
| Article No | ϕ - ϕ | L | H | W | Finish |
|-------------------|-----------------|-----|----|----|----------------|
| PT 5308601 160 66 | 160 | 178 | 27 | 17 | Brushed Nickel |
| PT 5308601 256 66 | 256 | 277 | 27 | 17 | Brushed Nickel |

Car



| Article No | ϕ - ϕ | L | H | W | Finish |
|------------------|-----------------|-----|----|----|----------------|
| PT 531260 160 66 | 160 | 172 | 28 | 22 | Brushed Nickel |

Chamfer



| Article No | ϕ - ϕ | L | H | W | Finish |
|------------------|-----------------|-----|----|----|----------------|
| PT 529460 160 66 | 160 | 176 | 33 | 21 | Brushed Nickel |
| PT 529460 320 66 | 320 | 336 | 33 | 21 | Brushed Nickel |

Aros



Thin

| Article No | ξ - ξ | L | H | W | Finish | |
|-----------------|---------------|-----|----|----|----------------|------------------------------------|
| VF 0230 064 Z23 | 64 | 96 | 20 | 33 | Brushed Nickel | Also available in polished chrome. |
| VF 0230 160 Z23 | 160 | 192 | 20 | 33 | Brushed Nickel | |



Dino

| Article No | ξ - ξ | L | H | W | Finish | |
|-----------------|---------------|-----|----|---|----------------|--|
| VF 0053 096 Z23 | 96/128 | 156 | 24 | 7 | Brushed Nickel | Also available in Polished Chrome, Aluminum Look, Black and White. |
| VF 0053 192 Z23 | 160/192 | 221 | 28 | 7 | Brushed Nickel | |
| VF 0053 320 Z23 | 288/320 | 349 | 28 | 7 | Brushed Nickel | |



Kares

| Article No | ξ - ξ | L | H | W | Finish | |
|-----------------|---------------|-----|----|----|----------------|--|
| VF 0306 032 Z23 | 32 | 88 | 20 | 20 | Brushed Nickel | |
| VF 0306 096 Z23 | 96 | 152 | 20 | 20 | Brushed Nickel | |
| VF 0306 192 Z23 | 192 | 312 | 20 | 20 | Brushed Nickel | |



Redo

| Article No | ξ - ξ | L | H | W | Finish | |
|-----------------|---------------|-----|----|----|----------------|--|
| VF 0226 128 Z23 | 128 | 137 | 32 | 15 | Brushed Nickel | |
| VF 0226 192 Z23 | 192 | 201 | 32 | 15 | Brushed Nickel | |



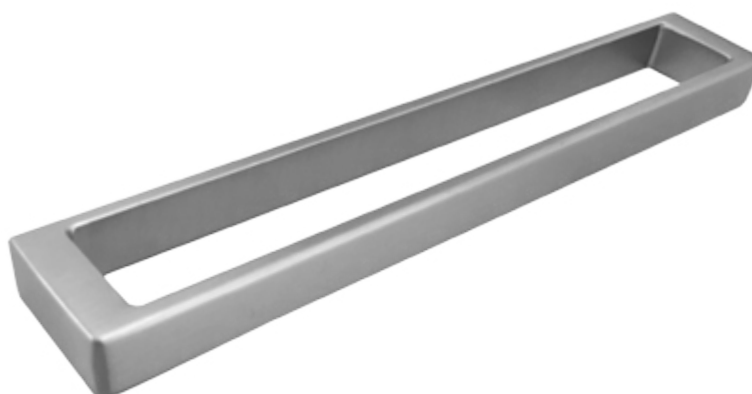
Roma

| Article No | C-C ⊕ ⊕ | L ≡ | H ≡ I | W ≡ | Finish | Comment |
|-----------------|------------|--------|----------|--------|----------------|---------|
| VF 0241 160 Z23 | 160 | 175 | 30 | 14 | Brushed Nickel | |
| VF 0241 192 Z23 | 192 | 207 | 30 | 14 | Brushed Nickel | |
| VF 0241 320 Z23 | 320 | 335 | 30 | 14 | Brushed Nickel | |



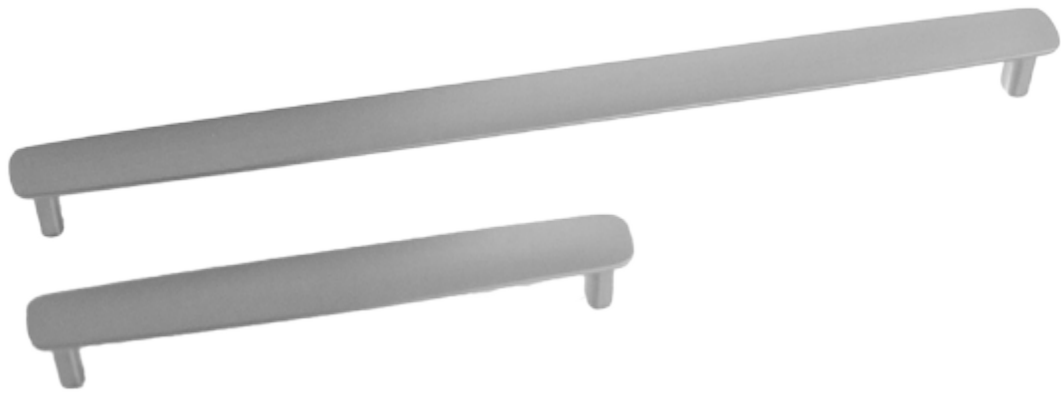
Grip

| Article No | C-C ⊕ ⊕ | L ≡ | H ≡ I | W ≡ | Finish | Comment |
|------------------|------------|--------|----------|--------|----------------|---------|
| PT 527660 160 66 | 160 | 184 | 35 | 10 | Brushed Nickel | |
| PT 527660 320 66 | 320 | 344 | 35 | 10 | Brushed Nickel | |



Cubico

| Article No | C-C ⊕ ⊕ | L ≡ | H ≡ I | W ≡ | Finish | Comment |
|------------------|------------|--------|----------|--------|----------------|---------|
| PT 518660 096 66 | 96 | 105 | 33 | 15 | Brushed Nickel | |
| PT 518660 192 66 | 192 | 201 | 33 | 15 | Brushed Nickel | |
| PT 518660 192 23 | 192 | 201 | 33 | 15 | Antique Brown | |



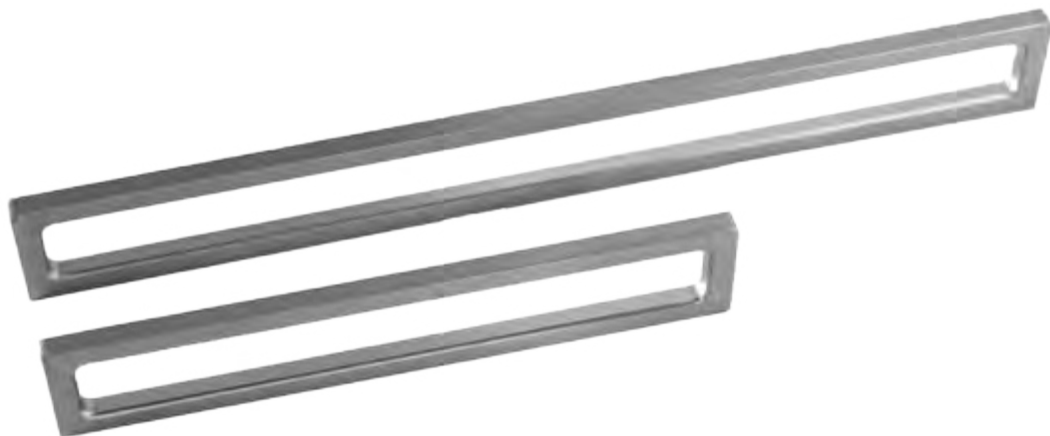
| Article No | C-C | L | H | W | Finish | Comment |
|------------------|-----|-----|----|----|----------------|---------|
| PT 534760 160 66 | 160 | 180 | 27 | 25 | Brushed Nickel | |
| PT 534760 320 66 | 320 | 340 | 27 | 25 | Brushed Nickel | |

Mirror



| Article No | C-C | L | H | W | Finish | Comment |
|------------------|---------|-----|----|---|----------------|---------|
| PT 521360 160 66 | 160 | 215 | 35 | 8 | Brushed Nickel | |
| PT 521360 320 66 | 256/320 | 405 | 35 | 8 | Brushed Nickel | |

Aero



| Article No | C-C | L | H | W | Finish | Comment |
|------------------|-----|-----|----|---|----------------|---------|
| PT 409920 192 66 | 192 | 200 | 44 | 8 | Brushed Nickel | |
| PT 409920 320 66 | 320 | 328 | 44 | 8 | Brushed Nickel | |

Zap



Bull

| Article No | C-C ⌀ | L | H | W | Finish | Comment |
|------------------|----------|-----|----|----|---------------|---------|
| PT 528260 160 23 | 160 | 170 | 33 | 15 | Antique Brown | |
| PT 528260 192 23 | 192 | 203 | 38 | 18 | Antique Brown | |
| PT 528260 288 23 | 228 | 306 | 45 | 21 | Antique Brown | |



Rio

| Article No | C-C ⌀ | L | H | W | Finish | Comment |
|------------------|----------|-----|----|----|----------------|---------|
| PT 530660 128 66 | 128 | 164 | 30 | 16 | Brushed Nickel | |
| PT 530660 128 23 | 128 | 164 | 30 | 16 | Antique Brown | |
| PT 530660 128 99 | 128 | 164 | 30 | 16 | Black | |



DH Thin

| Article No | C-C ⌀ | L | H | W | Finish | Comment |
|------------|----------|-----|----|---|-------------------------|---------|
| DH 24730 | 192 | 222 | 40 | 6 | Brushed Stainless Steel | |
| Dh 24750 | 320 | 350 | 40 | 6 | Brushed Stainless Steel | |



Angle

| Article No | C-C | L | H | W | Finish | Comment |
|-----------------|-----|-----|----|----|--------------------|---|
| VF 0077 064 L04 | 64 | 90 | 20 | 11 | Anodized Aluminium | The 128mm length is available in stainless steel look, matt white and matt black. |
| VF 0077 128 L04 | 128 | 150 | 20 | 11 | Anodized Aluminium | |
| VF 0077 192 L04 | 192 | 250 | 20 | 11 | Anodized Aluminium | |
| VF 0077 256 L04 | 256 | 300 | 20 | 11 | Anodized Aluminium | |



Minus

| Article No | C-C | L | H | W | Finish |
|-------------|-----|-----|----|----|-------------|
| EZ 4072 032 | 32 | 41 | 20 | 10 | Matt Chrome |
| EZ 4072 064 | 64 | 73 | 20 | 10 | Matt Chrome |
| EZ4072 096 | 96 | 105 | 20 | 10 | Matt Chrome |



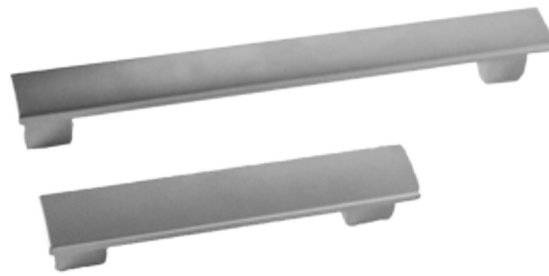
Draco

| Article No | C-C | L | H | W | Finish |
|----------------|-----|----|----|----|-----------------|
| EZ 0132 064 | 64 | 82 | 22 | 13 | Matt Chrome |
| EZ 0132 064 41 | 64 | 82 | 22 | 13 | Polished Chrome |



Block

| Article No | C-C | L | H | W | Finish | Comment |
|-------------|-----|-----|----|----|------------------|---|
| EZ 4060 032 | 32 | 72 | 23 | 28 | Matt Chrome Look | Matt Chrome look is a powder coat finish. |
| EZ 4060 096 | 96 | 136 | 23 | 28 | Matt Chrome Look | |
| EZ 4060 192 | 192 | 200 | 23 | 28 | Matt Chrome Look | |



| Article No | ξ - ξ | L | H | W | Finish | Comment |
|-------------|---------------|-----|----|----|-------------|--------------------------------------|
| EZ 0124 096 | 96 | 110 | 24 | 20 | Matt Chrome | Matching knob EZ 2076 - See page 01. |
| EZ 0124 160 | 160 | 174 | 26 | 20 | Matt Chrome | |

Estela



| Article No | ξ - ξ | L | H | W | Finish |
|-------------|---------------|-----|----|---|-------------|
| EZ 0112 096 | 96 | 113 | 35 | 9 | Matt Chrome |
| EZ 0112 128 | 128 | 145 | 35 | 9 | Matt Chrome |
| EZ 0112 192 | 192 | 209 | 35 | 9 | Matt Chrome |

Cargo



| Article No | ξ - ξ | L | H | W | Finish |
|-------------|---------------|-----|----|----|-------------|
| EZ 0137 128 | 128 | 143 | 38 | 10 | Matt Chrome |
| EZ 0137 160 | 160 | 175 | 38 | 10 | Matt Chrome |
| EZ 0137 192 | 192 | 207 | 38 | 10 | Matt Chrome |

Gea



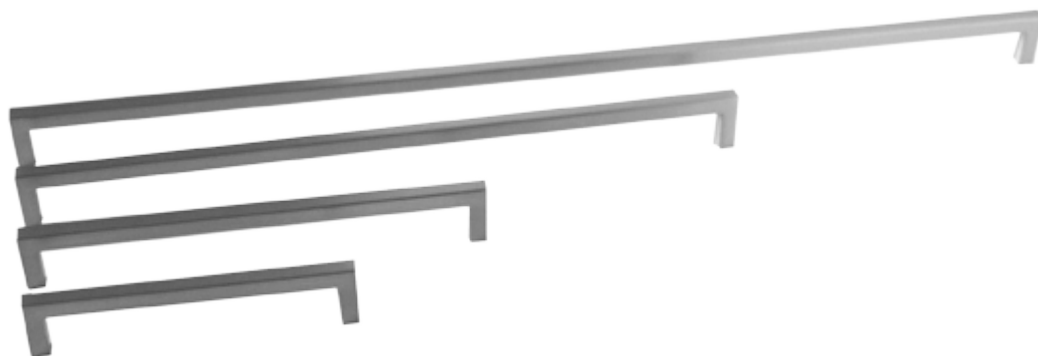
| Article No | ξ - ξ | L | H | W | Finish |
|-------------|---------------|-----|----|----|-------------|
| EZ 0130 128 | 128 | 168 | 36 | 14 | Matt Chrome |
| EZ 0130 192 | 192 | 232 | 36 | 14 | Matt Chrome |

Basic



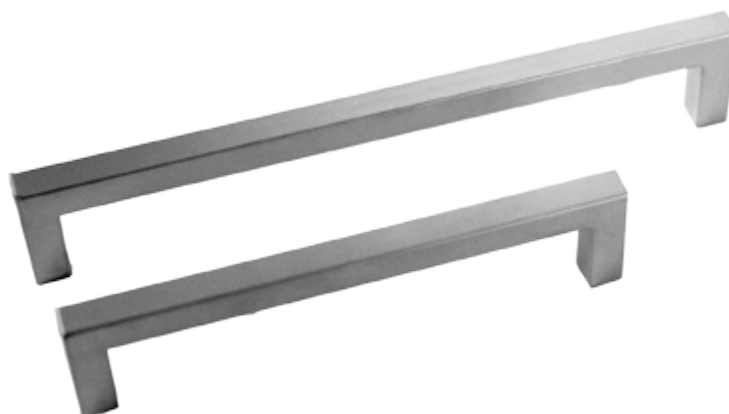
Cube

| Article No | C-C ⌀ | L | H | W | Finish | Comment |
|-------------|----------|-----|----|----|-------------|---------|
| EZ 0080 128 | 128 | 173 | 30 | 25 | Matt Chrome | |
| EZ 0080 160 | 160 | 205 | 30 | 25 | Matt Chrome | |
| EZ 0080 224 | 224 | 247 | 30 | 25 | Matt Chrome | |



Quanto

| Article No | C-C ⌀ | L | H | W | Finish | Comment |
|-------------|----------|-----|----|---|--|------------------------------|
| EZ 0143 032 | 32 | 41 | 28 | 9 | Available in Matt Chrome, Polished Chrome, Brushed Nickel and Black. | 32mm not available in Black. |
| EZ 0143 128 | 128 | 137 | 28 | 9 | | |
| EZ 0143 192 | 192 | 200 | 28 | 9 | | |
| EZ 0143 320 | 320 | 329 | 28 | 9 | | |
| EZ 0143 492 | 492 | 500 | 28 | 9 | | |



Quanto 2

| Article No | C-C ⌀ | L | H | W | Finish | Comment |
|-------------|----------|-----|----|----|---|---------|
| EZ 0142 160 | 160 | 172 | 40 | 12 | Available in Matt Chrome, Polished Chrome and brushed Nickel. | |
| EZ 0142 224 | 224 | 236 | 40 | 12 | | |



| Article No | C-C | L | H | W | Finish | Comment |
|-------------|-----|-----|----|----|-------------|---------|
| EZ 0021 160 | 160 | 185 | 30 | 25 | Matt Chrome | |

Osma



| Article No | C-C | L | H | W | Finish |
|-------------|-----|-----|----|----|-------------|
| EZ 0033 128 | 128 | 160 | 28 | 18 | Matt Chrome |

Boeing



| Article No | C-C | L | H | W | Finish |
|-------------|-----|-----|----|----|-------------|
| EZ 0149 160 | 160 | 240 | 30 | 30 | Matt Chrome |

Flat Curve



| Article No | C-C | L | H | W | Finish |
|------------------|-----|-----|----|-------|----------------|
| PT 527860 160 66 | 160 | 183 | 34 | 15/30 | Brushed Nickel |
| PT 527860 320 66 | 320 | 343 | 34 | 15/30 | Brushed Nickel |

Fridge



| Article No | ξ - ζ | L | H | W | Finish |
|-------------|-----------------|-----|----|----|-------------|
| EZ 0118 128 | 128 | 167 | 30 | 22 | Matt Chrome |
| EZ 0118 160 | 128 | 198 | 30 | 22 | Matt Chrome |

Horizon



| Article No | ξ - ζ | L | H | W | Finish | Comment |
|----------------|-----------------|-----|----|----|----------------|---|
| FH 2024 128 10 | 128 | 155 | 21 | 20 | Brushed Nickel | Also available in Polished Chrome, Black and White. |
| FH 2024 160 10 | 160 | 193 | 34 | 22 | Brushed Nickel | |

Sydney



| Article No | ξ - ζ | L | H | W | Finish |
|-------------|-----------------|-----|----|----|-------------|
| EZ 0147 160 | 160 | 169 | 38 | 34 | Matt Chrome |
| EZ 0147 192 | 192 | 201 | 38 | 34 | Matt Chrome |

Adria



| Article No | ξ - ζ | L | H | W | Finish |
|-----------------|-----------------|-----|----|----|----------------|
| VF 0090 160 Z23 | 160 | 170 | 28 | 25 | Brushed Nickel |
| VF 0090 224 Z23 | 224 | 234 | 28 | 25 | Brushed Nickel |
| VF 0090 320 Z23 | 320 | 330 | 28 | 25 | Brushed Nickel |

Geometric

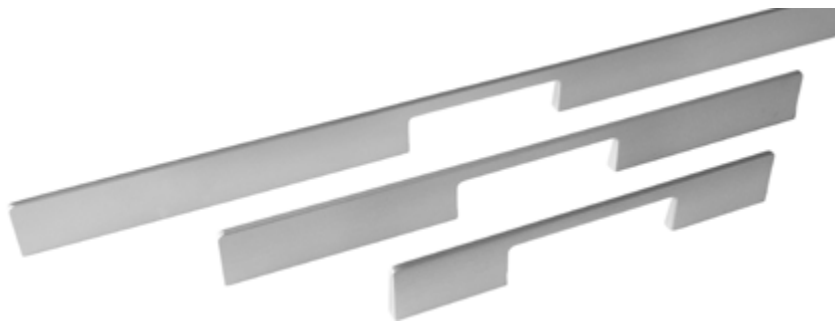


EZ 0155

EZ 0156

Laia

| Article No | C-C | L | H | W | Finish |
|-------------|-----|-----|----|---|----------------|
| EZ 0155 224 | 224 | 250 | 32 | 8 | Brushed Nickel |
| EZ 0156 224 | 224 | 250 | 32 | 8 | Brushed Nickel |



Laia - C

| Article No | C-C | L | H | W | Finish | Comment |
|-------------|-----|-----|----|---|-------------------|---------|
| EW 0003 192 | 192 | 218 | 32 | 8 | Brushed Aluminium | |
| EW 0003 320 | 320 | 346 | 32 | 8 | Brushed Aluminium | |
| EW 0003 492 | 492 | 518 | 32 | 8 | Brushed Aluminium | |



Laia - D

| Article No | C-C | L | H | W | Finish |
|-------------|-----|-----|----|---|-------------------|
| EW 0004 192 | 192 | 218 | 32 | 8 | Brushed Aluminium |
| EW 0004 320 | 320 | 346 | 32 | 8 | Brushed Aluminium |
| EW 0004 492 | 492 | 518 | 32 | 8 | Brushed Aluminium |



Twin

| Article No | C-C | L | H | W | Finish |
|-------------|-----|-----|----|-----|----------------|
| VF 0055 128 | 128 | 152 | 30 | 7.5 | Brushed Chrome |
| VF 0055 192 | 192 | 216 | 30 | 7.5 | Brushed Chrome |
| VF 0055 256 | 256 | 316 | 30 | 7.5 | Brushed Chrome |
| VF 0055 384 | 384 | 416 | 30 | 7.5 | Brushed Chrome |
| VF 0055 480 | 480 | 516 | 30 | 7.5 | Brushed Chrome |



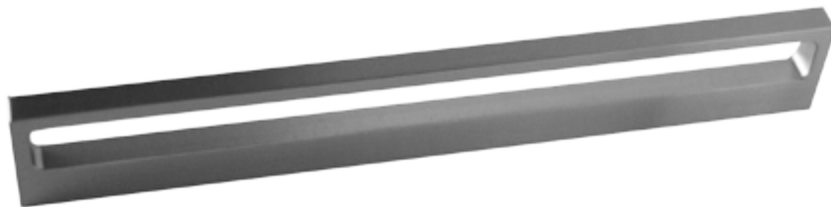
Aker

| Article No | C-C ⊕ ⊕ | L | H | W | Finish |
|-------------|------------|-----|----|----|--------------------|
| EW 1005 192 | 192 | 220 | 29 | 10 | Anodised Aluminium |
| EW 1005 320 | 320 | 348 | 29 | 10 | Anodised Aluminium |
| EW 1005 448 | 448 | 476 | 29 | 10 | Anodised Aluminium |



V6

| Article No | C-C ⊕ ⊕ | L | H | W | Finish | Comment |
|------------------|------------|-----|----|----|----------------|---------|
| PT 527160 224 66 | 224 | 232 | 40 | 12 | Brushed Nickel | |
| PT 527160 320 66 | 320 | 400 | 40 | 12 | Brushed Nickel | |



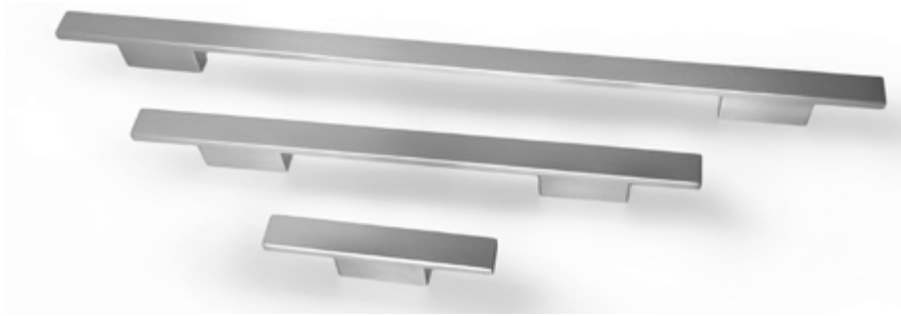
Detail 9

| Article No | C-C ⊕ ⊕ | L | H | W | Finish | Comment |
|----------------|------------|-----|----|----|----------------|-----------------------------|
| FH 2562.032.10 | 32 | 44 | 34 | 10 | Brushed Nickel | Also available in Polished |
| FH 2562.064.10 | 64 | 76 | 34 | 10 | Brushed Nickel | Chrome, Anodized and Black. |
| FH 2562.128.10 | 128 | 140 | 34 | 10 | Brushed Nickel | |
| FH 2562.224.10 | 224 | 236 | 34 | 10 | Brushed Nickel | |



Wall

| Article No | C-C ⊕ ⊕ | L | H | W | Finish |
|----------------|------------|-----|----|-----|----------------|
| FH 2563.064.10 | 64 | 92 | 28 | 9.5 | Brushed Chrome |
| FH 2563.160.10 | 160 | 230 | 35 | 11 | Brushed Chrome |
| FH 2563.224.10 | 224 | 294 | 35 | 11 | Brushed Chrome |



Ele

| Article No | C-C ⊕ ⊕ | L ≡ | H ≡ I | W ≡ | Finish |
|------------------|------------|--------|----------|--------|----------------|
| PT 516860 032 66 | 32 | 100 | 25 | 16 | Brushed Nickel |
| PT 516860 160 66 | 160 | 260 | 25 | 16 | Brushed Nickel |
| PT 516860 320 66 | 320 | 400 | 25 | 16 | Brushed Nickel |



Pool

| Article No | C-C ⊕ ⊕ | L ≡ | H ≡ I | W ≡ | Finish | Comment |
|----------------|------------|--------|----------|--------|----------------|---|
| FH 2569 160 10 | 160 | 200 | 29 | 11 | Brushed Nickel | Also Available in Matt Chrome, Polished Chrome and Black. |
| FH 2569 224 10 | 224 | 264 | 29 | 11 | Brushed Nickel | |
| FH 2569 320 10 | 320 | 360 | 29 | 11 | Brushed Nickel | |



Twisted

| Article No | C-C ⊕ ⊕ | L ≡ | H ≡ I | W ≡ | Finish |
|-----------------|------------|--------|----------|--------|----------------|
| VF 0108.160.Z23 | 160 | 170 | 26 | 20 | Brushed Nickel |
| VF 0108.320.Z23 | 320 | 340 | 26 | 20 | Brushed Nickel |



Flat

| Article No | C-C ⊕ ⊕ | L ≡ | H ≡ I | W ≡ | Finish |
|------------------|------------|--------|----------|--------|----------------|
| PT 512860 192 66 | 192 | 207 | 34 | 7.5 | Brushed Nickel |
| PT 512860 256 66 | 256 | 271 | 34 | 7.5 | Brushed Nickel |
| PT 512860 448 66 | 448 | 463 | 34 | 7.5 | Brushed Nickel |



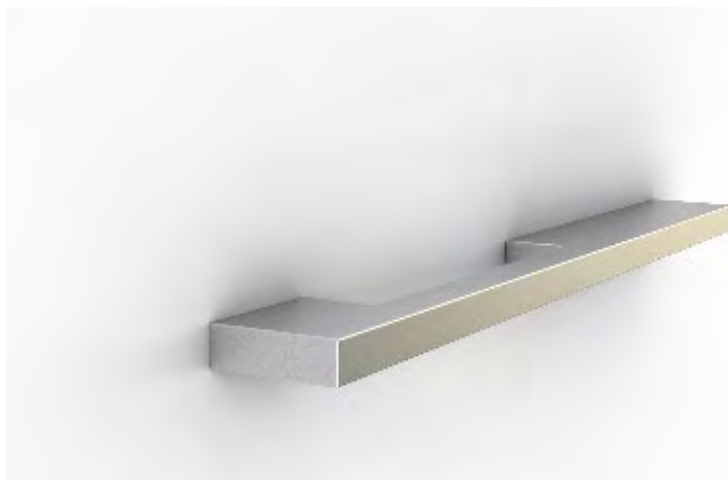
Paris

| Article No | C-C ⊕ ⊕ | L | H | W H | Finish | Comment |
|----------------|------------|-----|----|--------|----------------|---|
| FH 2029.064.10 | 64 | 88 | 25 | 11 | Brushed Nickel | Also available in Matt Chrome, Polished Chrome and Black. |
| FH 2030.096.10 | 96 | 120 | 25 | 11 | Brushed Nickel | |
| FH 2031.128.10 | 128 | 160 | 30 | 15 | Brushed Nickel | |
| FH 2032.160.10 | 160 | 192 | 30 | 15 | Brushed Nickel | |
| FH 2032.320.10 | 320 | 352 | 30 | 15 | Brushed Nickel | |



Skyline

| Article No | C-C ⊕ ⊕ | L | H | W H | Finish | Comment |
|----------------|------------|-----|----|--------|----------------|---|
| FH 2564.160.10 | 160 | 230 | 35 | 11 | Brushed Nickel | Also available in Matt Chrome, Polished Chrome and Black. |
| FH 2564.224.10 | 224 | 290 | 35 | 11 | Brushed Nickel | |



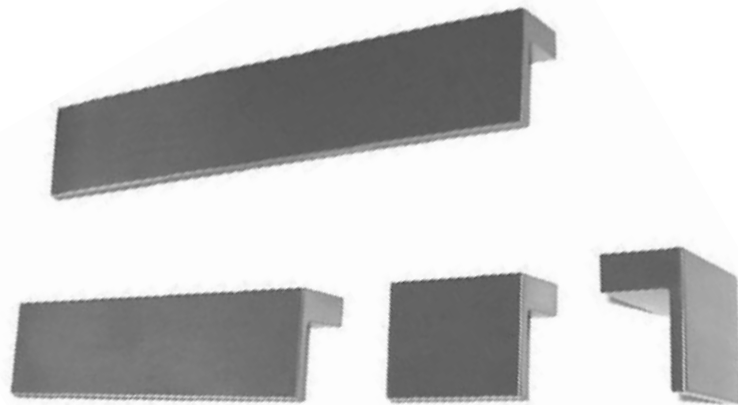
Arki+

| Article No | C-C ⊕ ⊕ | L | H | W H | Finish | Comment |
|-----------------|------------|-----|----|--------|----------------|--|
| FH 2520.256.10 | 128+96 | 256 | 28 | 9 | Brushed Nickel | The Arki+ comes in a symmetrical (C) and asymmetrical version. Also available in Polished Chrome and Black finish. |
| FH 2520.256C.10 | 128/224 | 256 | 28 | 9 | Brushed Nickel | |
| FH 2520.352.10 | 128+192 | 352 | 28 | 9 | Brushed Nickel | |
| FH 2520.352C.10 | 128/320 | 352 | 28 | 9 | Brushed Nickel | |



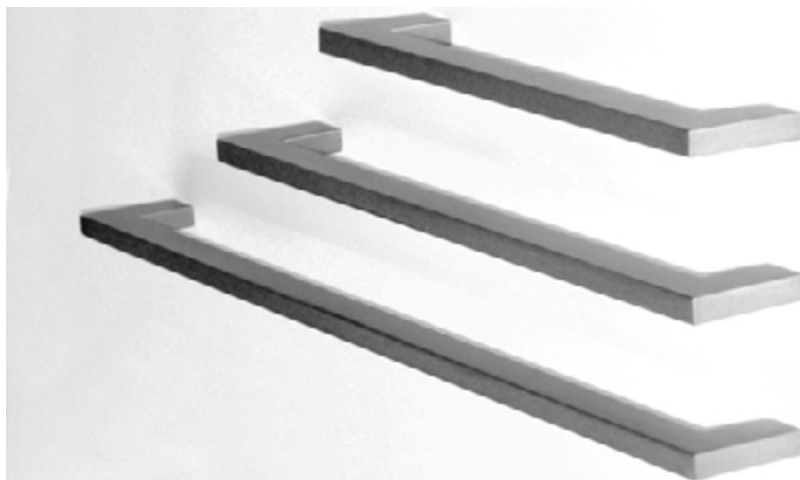
Barcelona

| Article No | $\frac{C-C}{\Phi \Phi}$ | $\frac{L}{\text{---}}$ | $\frac{H}{\text{---}}$ | $\frac{W}{\text{---}}$ | Finish | Comment |
|-----------------|-------------------------|------------------------|------------------------|------------------------|----------------|---|
| FH 2021.032.10L | 32 | 75 | 25 | 11 | Brushed Nickel | Some versions also available in Matt Chrome, Polished Chrome and Black. |
| FH 2021.032.10R | 32 | 75 | 25 | 11 | Brushed Nickel | |
| FH 2021.096.10 | 96 | 150 | 30 | 15 | Brushed Nickel | |
| FH 2021.128.10 | 96 | 180 | 30 | 15 | Brushed Nickel | |
| FH 2021.192.10 | 192 | 276 | 30 | 15 | Brushed Nickel | |



Quadra

| Article No | $\frac{C-C}{\Phi \Phi}$ | $\frac{L}{\text{---}}$ | $\frac{H}{\text{---}}$ | $\frac{W}{\text{---}}$ | Finish | Comment |
|----------------|-------------------------|------------------------|------------------------|------------------------|----------------|--|
| FQ 3007.032.10 | 32 | 46 | 22.5 | 36 | Brushed Nickel | Also available in Polished Chrome and Black. |
| FQ 3007.128.10 | 128 | 142 | 22.5 | 36 | Brushed Nickel | |
| FQ 3007.160.10 | 160 | 174 | 22.5 | 36 | Brushed Nickel | |
| FQ 3007.224.10 | 224 | 238 | 22.5 | 36 | Brushed Nickel | |



Duna

| Article No | $\frac{C-C}{\Phi \Phi}$ | $\frac{L}{\text{---}}$ | $\frac{H}{\text{---}}$ | $\frac{W}{\text{---}}$ | Finish | Comment |
|----------------|-------------------------|------------------------|------------------------|------------------------|----------------|---|
| FH 3037.128.10 | 128 | 142 | 35 | 7 | Brushed Nickel | Also available in Matt Chrome, Polished Chrome and Black. |
| FH 3037.160.10 | 160 | 174 | 35 | 7 | Brushed Nickel | |
| FH 3037.224.10 | 224 | 238 | 35 | 7 | Brushed Nickel | |



| Article No | $\overset{c-c}{\oplus} \oplus$ | \overline{L} | \overline{H} | \overline{W} | Finish |
|-------------|--------------------------------|----------------|----------------|----------------|-----------------|
| EI 1017 192 | 192 | 256 | 32 | 16 | Stainless Steel |
| EI 1017 320 | 320 | 384 | 32 | 16 | Stainless Steel |

Pletina



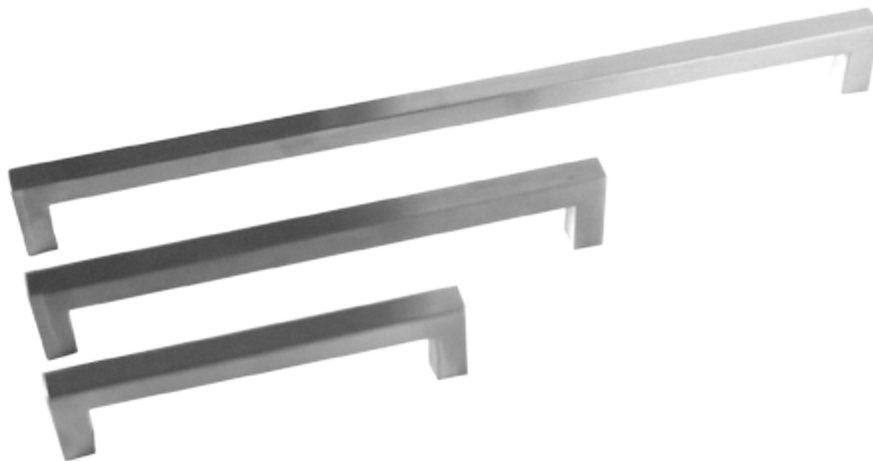
| Article No | $\overset{c-c}{\oplus} \oplus$ | \overline{L} | \overline{H} | \overline{W} | Finish |
|-------------|--------------------------------|----------------|----------------|----------------|-----------------|
| EI 1029 192 | 192 | 256 | 35 | 11 | Stainless Steel |
| EI 1029 320 | 320 | 384 | 35 | 11 | Stainless Steel |
| EI 1029 542 | 542 | 606 | 35 | 11 | Stainless Steel |

Nidia



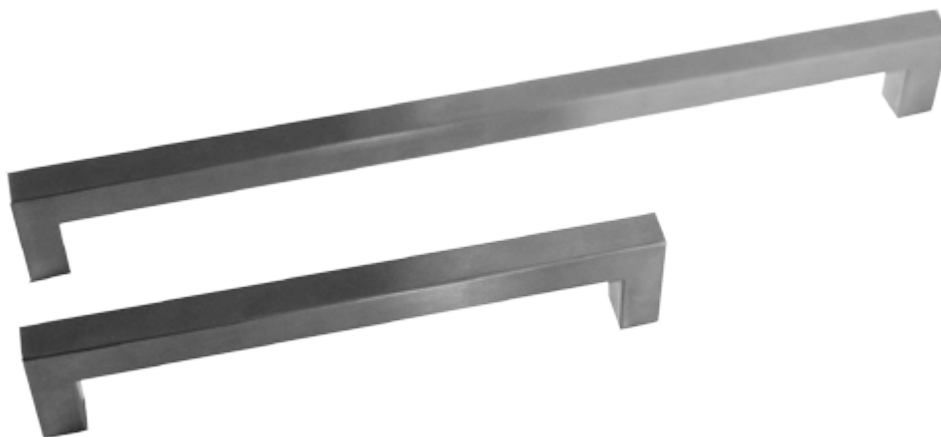
| Article No | $\overset{c-c}{\oplus} \oplus$ | \overline{L} | \overline{H} | \overline{W} | Finish |
|-----------------|--------------------------------|----------------|----------------|----------------|-----------------|
| VF 0064 192 S25 | 192 | 214 | 45 | 14 | Stainless Steel |
| VF 0064 292 S25 | 292 | 314 | 45 | 14 | Stainless Steel |
| VF 0064 342 S25 | 342 | 364 | 45 | 14 | Stainless Steel |
| VF 0064 392 S25 | 392 | 414 | 45 | 14 | Stainless Steel |
| VF 0064 492 S25 | 492 | 514 | 45 | 14 | Stainless Steel |

Kombi



Ferri

| Article No | C-C ⌀ | L | H | W | Finish |
|-----------------|----------|-----|----|----|-------------------------|
| VF 0249 128 S25 | 128 | 140 | 35 | 12 | Brushed Stainless Steel |
| VF 0249 192 S25 | 192 | 204 | 35 | 12 | Brushed Stainless Steel |
| VF 0249 320 S25 | 320 | 332 | 35 | 12 | Brushed Stainless Steel |
| VF 0249 512 S25 | 512 | 524 | 35 | 12 | Brushed Stainless Steel |



Fort

| Article No | C-C ⌀ | L | H | W | Finish | Comment |
|-------------|----------|-----|----|----|-------------------------|----------------------------------|
| VF 0076 192 | 192 | 206 | 40 | 15 | Brushed Stainless Steel | Also available in other lengths. |
| VF 0076 320 | 320 | 334 | 40 | 15 | Brushed Stainless Steel | |
| VF 0076 492 | 492 | 506 | 40 | 15 | Brushed Stainless Steel | |



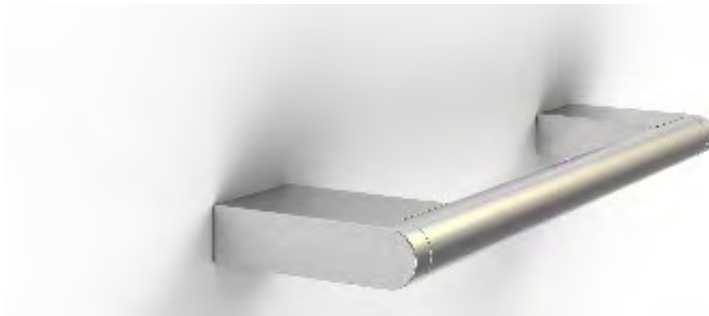
Oval

| Article No | C-C ⌀ | L | H | W | Finish |
|-----------------|----------|-----|----|----|-----------------|
| VF 0075 192 S25 | 192 | 200 | 31 | 21 | Stainless Steel |
| VF 0075 292 S25 | 292 | 300 | 31 | 21 | Stainless Steel |
| VF 0075 392 S25 | 392 | 400 | 31 | 21 | Stainless Steel |



Modular

| Article No | C-C ⊕ ⊕ | L | H | W | ∅ | Finish |
|-------------|------------|-----|----|----|----|-----------------|
| EI 1012.160 | 160 | 224 | 34 | 12 | 12 | Stainless Steel |
| EI 1012.320 | 320 | 384 | 34 | 12 | 12 | Stainless Steel |
| EI 1012.492 | 492 | 556 | 34 | 12 | 12 | Stainless Steel |
| EI 1012.792 | 792 | 856 | 34 | 12 | 12 | Stainless Steel |



Mountain

| Article No | C-C ⊕ ⊕ | L | H | W | Finish |
|----------------|------------|-----|----|----|-------------------------|
| FH 1016.128.01 | 128 | 148 | 38 | 10 | Brushed Stainless Steel |
| FH 1016.160.01 | 160 | 180 | 38 | 10 | Brushed Stainless Steel |
| FH 1016.224.01 | 224 | 244 | 38 | 10 | Brushed Stainless Steel |
| FH 1016.320.01 | 320 | 340 | 38 | 10 | Brushed Stainless Steel |
| FH 1016.416.01 | 416 | 436 | 38 | 10 | Brushed Stainless Steel |



Beat

| Article No | C-C ⊕ ⊕ | L | H | W | ∅ | Finish |
|----------------|------------|-----|----|----|----|-------------------------|
| FH 1018.128.01 | 128 | 140 | 36 | 12 | 12 | Brushed Stainless Steel |
| FH 1018.160.01 | 160 | 172 | 36 | 12 | 12 | Brushed Stainless Steel |
| FH 1018.224.01 | 224 | 236 | 36 | 12 | 12 | Brushed Stainless Steel |
| FH 1018.320.01 | 320 | 332 | 36 | 12 | 12 | Brushed Stainless Steel |

Also available in Polished Chrome.
128 and 160 available in copper and gold.



Beat

| Article No | C-C ⊕ ⊕ | L | H | W | Finish |
|------------------|------------|-----|----|----|------------------------|
| FH 1018.128.91BR | 128 | 140 | 36 | 12 | Polished/Brown Leather |
| FH 1018.128.91BL | 128 | 140 | 36 | 12 | Polished/Black Leather |



| Article No | $\frac{C-C}{\Phi \Phi}$ | $\frac{L}{\text{---}}$ | $\frac{H}{\text{---}}$ | $\frac{W}{\text{---}}$ | $\frac{\text{---}}{\text{---}}$ | Finish |
|-------------|-------------------------|------------------------|------------------------|------------------------|---------------------------------|-----------------|
| EI 0008 160 | 160 | 168 | 29 | 8 | 8 | Stainless Steel |
| EI 0008 320 | 320 | 328 | 29 | 8 | 8 | Stainless Steel |

D 8



| Article No | $\frac{C-C}{\Phi \Phi}$ | $\frac{L}{\text{---}}$ | $\frac{H}{\text{---}}$ | $\frac{W}{\text{---}}$ | $\frac{\text{---}}{\text{---}}$ | Finish |
|-------------|-------------------------|------------------------|------------------------|------------------------|---------------------------------|-----------------|
| EI 0010 160 | 160 | 170 | 35 | 10 | 10 | Stainless Steel |
| EI 0010 320 | 320 | 330 | 35 | 10 | 10 | Stainless Steel |

D 10



| Article No | $\frac{C-C}{\Phi \Phi}$ | $\frac{L}{\text{---}}$ | $\frac{H}{\text{---}}$ | $\frac{W}{\text{---}}$ | $\frac{\text{---}}{\text{---}}$ | Finish |
|-------------|-------------------------|------------------------|------------------------|------------------------|---------------------------------|-----------------|
| EI 0009 160 | 160 | 168 | 35 | 16 | 16x8 | Stainless Steel |
| EI 0009 320 | 320 | 328 | 35 | 16 | 16x8 | Stainless Steel |

D 16x8



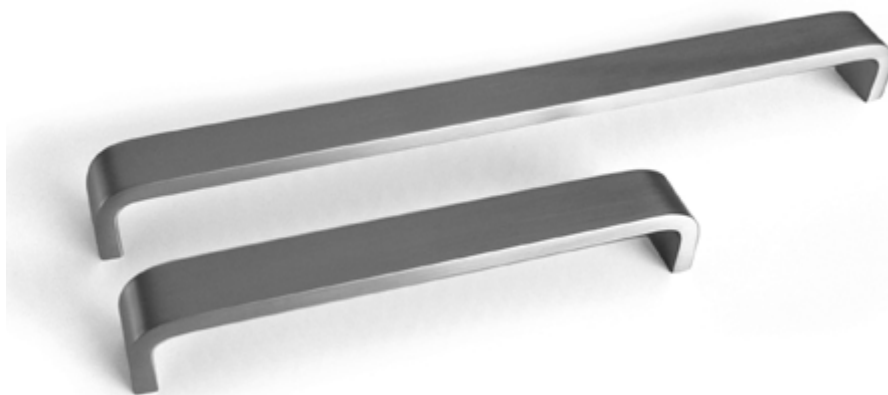
Sense

| Article No | C-C ⌀ | L | H | W | Finish |
|-----------------|----------|-----|----|----|----------------|
| VF 0195 192 L24 | 192 | 199 | 30 | 25 | Brushed Nickel |
| VF 0195 320 L24 | 320 | 327 | 30 | 25 | Brushed Nickel |
| VF 0195 480 L24 | 480 | 487 | 30 | 25 | Brushed Nickel |



Wide

| Article No | C-C ⌀ | L | H | W | Finish |
|-----------------|----------|-----|----|----|----------------|
| VF 0057 160 Z23 | 160 | 167 | 37 | 30 | Brushed Nickel |
| VF 0057 224 Z23 | 224 | 231 | 37 | 30 | Brushed Nickel |



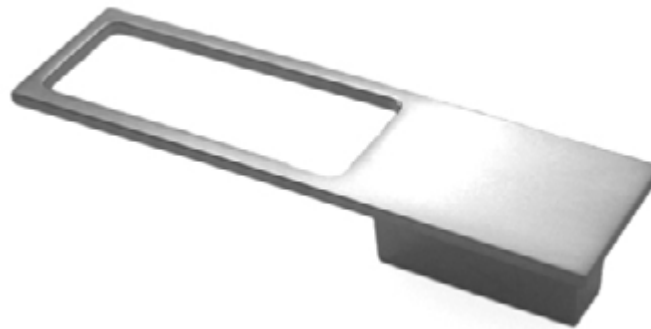
Gloss

| Article No | C-C ⌀ | L | H | W | Finish |
|---------------|----------|-----|----|----|----------------|
| PT 410220 160 | 160 | 168 | 33 | 25 | Brushed Nickel |
| PT 410220 192 | 192 | 200 | 33 | 25 | Brushed Nickel |
| PT 410220 320 | 320 | 328 | 33 | 25 | Brushed Nickel |



| Article No | $\frac{C-C}{\Phi}$ | L | H | W | Finish |
|-------------|--------------------|----|----|----|-------------|
| EZ 2083 075 | 64 | 70 | 22 | 70 | Matt Chrome |

Magna



| Article No | $\frac{C-C}{\Phi}$ | L | H | W | Finish |
|----------------|--------------------|-----|----|----|-------------|
| FH 2566.032.05 | 32 | 144 | 28 | 40 | Matt Chrome |

Thema



| Article No | $\frac{C-C}{\Phi}$ | L | H | W | \varnothing | Finish |
|-----------------|--------------------|-----|----|----|---------------|----------------------------|
| ANT R 15 D | -- | -- | 30 | 10 | 10 | Stainless Wire + Aluminium |
| ANT B 45/95 | 95 | 45 | 35 | 10 | 10 | Stainless Wire + Aluminium |
| ANT B 90/140 | 140 | 90 | 35 | 10 | 10 | Stainless Wire + Aluminium |
| ANT B 200 / 250 | 250 | 200 | 35 | 10 | 10 | Stainless Wire + Aluminium |
| ANT S 45 | 45 | -- | 35 | 4 | -- | Stainless Wire + Aluminium |
| ANT S 65 | 65 | -- | 35 | 4 | -- | Stainless Wire + Aluminium |
| ANT S 105 | 105 | -- | 35 | 4 | -- | Stainless Wire + Aluminium |

Ant



KAT

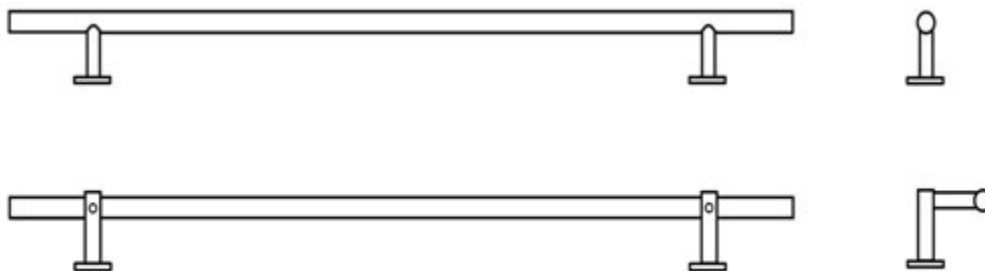
| Article No | C-C ⌀ | L | H | W | Ø | Finish | Comment |
|-------------|----------|------|----|----|----|-----------------|---|
| KAT 300 | 200 | 300 | 65 | -- | 19 | Stainless Steel | Alternative electroplated finishes can be applied to KAT Handles at an additional cost. |
| KAT 500 | 300 | 500 | 65 | -- | 19 | Stainless Steel | |
| KAT 850 | 650 | 850 | 65 | -- | 19 | Stainless Steel | |
| KAT 1200 | 900 | 1200 | 65 | -- | 19 | Stainless Steel | |
| KAT 300 OS | 200 | 300 | 65 | 85 | 19 | Stainless Steel | |
| KAT 500 OS | 300 | 500 | 65 | 85 | 19 | Stainless Steel | |
| KAT 850 OS | 650 | 850 | 65 | 85 | 19 | Stainless Steel | |
| KAT 1200 OS | 900 | 1200 | 65 | 85 | 19 | Stainless Steel | |
| KAT PLATE | -- | -- | 10 | -- | 30 | Stainless Steel | |

Custom sizes and finishes are available - please contact us for details

Please specify application when ordering to ensure correct bolts are supplied.

Back to back application or single sided installation possible.

For single sided application to glass doors, please also specify KAT PLATE

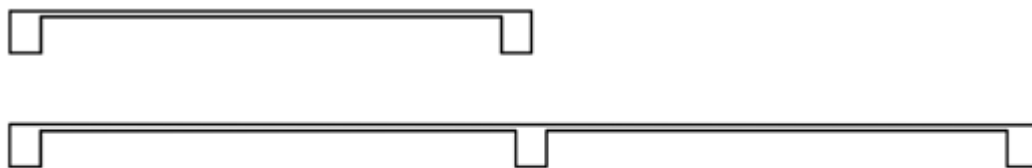




| Article No | $\frac{C-C}{\oplus \oplus}$ | $\frac{L}{\text{---}}$ | $\frac{H}{\text{---}}$ | $\frac{W}{\text{---}}$ | Finish | Comment |
|-------------|-----------------------------|------------------------|------------------------|------------------------|-----------------|---|
| KAT G 300 | 270 | 300 | 40 | 30 | Stainless Steel | Alternative electroplated finishes can be applied to KAT G Handles at an additional cost. |
| KAT G 500 | 470 | 500 | 40 | 30 | Stainless Steel | |
| KAT G 1000 | 485/485 | 1000 | 40 | 30 | Stainless Steel | |
| KAT GC 300 | 270 | 300 | 40 | 60 | Stainless Steel | |
| KAT GC 500 | 470 | 500 | 40 | 60 | Stainless Steel | |
| KAT GC 1000 | 485/485 | 1000 | 40 | 60 | Stainless Steel | |

KAT G

Back to back application or single sided installation possible on all models
 KAT G 1000 and KAT GC 1000 with three mounting blocks
 KAT GC 300, 500 and 1000 are off-set





i-4400
&
i-4000

| Article No | $\frac{C-C}{\Phi}$ | L | H | W | \square | Finish | Comment |
|------------|--------------------|-----|----|----|-----------|-----------------|--|
| DH 44130 | 300 | 320 | 65 | 20 | 20 | Stainless Steel | All handles come as a pair for back to back application only. Other sizes are available. |
| DH 44260 | 600 | 630 | 90 | 30 | 30 | Stainless Steel | |
| DH 44320 | 200 | 300 | 65 | 20 | 20 | Stainless Steel | |
| DH 44325 | 250 | 400 | 65 | 20 | 20 | Stainless Steel | |
| DH 44330 | 300 | 450 | 65 | 20 | 20 | Stainless Steel | |



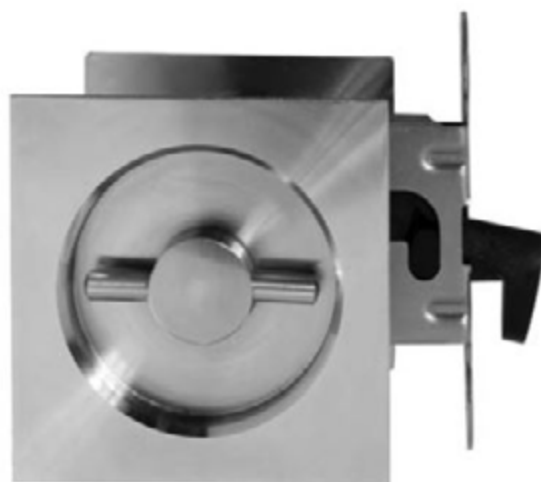
i-3310
&
i-1000

| Article No | $\frac{C-C}{\Phi}$ | L | H | W | \square | \emptyset | Finish | Comment |
|------------|--------------------|-----|----|----|-----------|-------------|-----------------|--|
| DH 42430 | 300 | 315 | 55 | 15 | -- | 15 | Stainless Steel | All handles come as a pair for back to back application only. Other sizes are available. |
| DH 42530 | 300 | 320 | 65 | 20 | -- | 20 | Stainless Steel | |
| DH 42630 | 300 | 330 | 90 | 30 | -- | 30 | Stainless Steel | |
| DH 42660 | 600 | 630 | 90 | 30 | -- | 30 | Stainless Steel | |
| DH 44530 | 300 | 320 | 65 | 40 | 40x20 | -- | Stainless Steel | |
| DH 44550 | 500 | 520 | 65 | 40 | 40x20 | -- | Stainless Steel | |

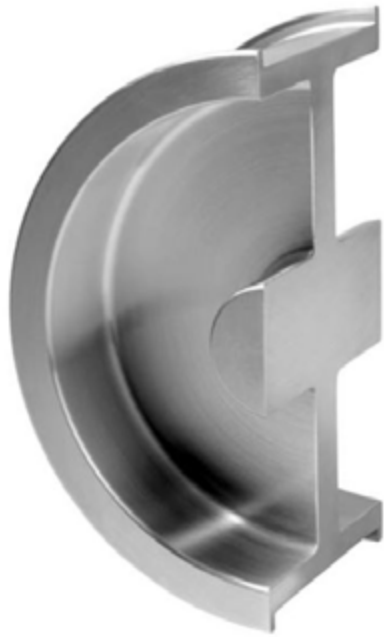


| Article No | $\frac{F-C}{\phi}$ | L | H | W | ϕ | Finish | Comment |
|------------|--------------------|-----|----|----|--------|-----------------|--|
| DH 41129 | -- | -- | 28 | -- | 30 | Stainless Steel | All handles come as a pair for back to back application only. Other sizes are available. |
| DH 42130 | 300 | 320 | 55 | 20 | 20 | Stainless Steel | |

Cavity Slider Lock



| Article No | ϕ | \square | H | Finish | Comment |
|------------|--------|-----------|---|-----------------|---------|
| DH 53100 | 48 | -- | 2 | Stainless Steel | |
| DH 53300 | -- | 65 | 2 | Stainless Steel | |



DH530
&
DH533

| Article No | L | H | W | Finish | Comment |
|------------|----|-----|-------|-----------------|---|
| DH 53035 | 50 | 100 | 35/39 | Stainless Steel | These cavity slider handles are designed to be glued into position. Recommended adhesive is SIKAFLEX 11FC or similar. |
| DH 53040 | 50 | 100 | 40/44 | Stainless Steel | |
| DH 53335 | 50 | 100 | 35 | Stainless Steel | |
| DH 53340 | 50 | 100 | 40 | Stainless Steel | |

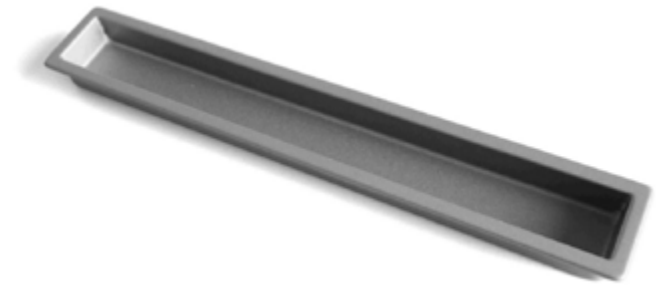
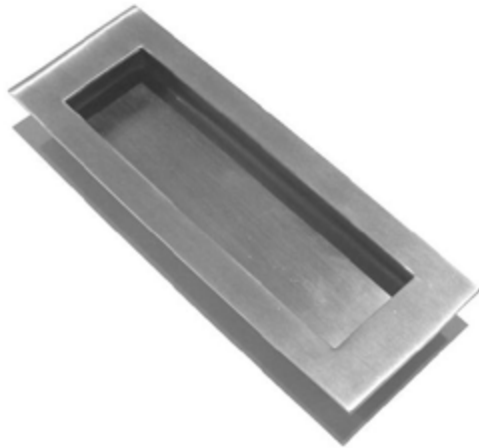


DH537

| Article No | L | H | W | Finish | Comment |
|------------|----|-----|----|-----------------|---|
| DH 53701 | 55 | 120 | 35 | Stainless Steel | These cavity slider handles are designed to be glued into position. Recommended adhesive is SIKAFLEX 11FC or similar. |
| DH 53703 | 55 | 120 | 40 | Stainless Steel | |
| DH 53705 | 55 | 120 | 50 | Stainless Steel | |
| DH 53728 | 85 | 200 | 40 | Stainless Steel | |



| Article No | L | H | W | Finish | Comment |
|------------|-----|----|----|-------------------------|----------------------------------|
| DH53516 | 206 | 40 | 15 | Brushed Stainless Steel | Also available in other lengths. |
| DH53519 | 334 | 40 | 15 | Brushed Stainless Steel | |
| DH53514 | 506 | 40 | 15 | Brushed Stainless Steel | |

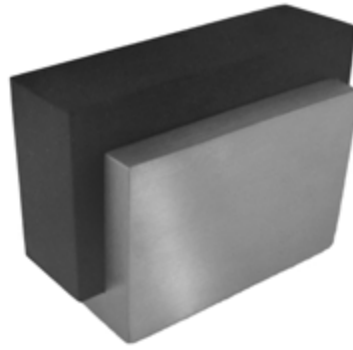


| Article No | L | H | W | Finish |
|----------------|-----|----|----|-------------------------|
| FH 1020.140.10 | 140 | 16 | 50 | Brushed Stainless Steel |
| EZ 4082 160 | 160 | 10 | 25 | Matt Chrome Look |



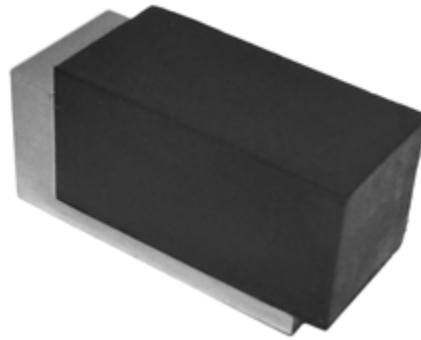
| Article No | H | ∅ | Finish |
|-----------------|----|-------|-------------------------|
| VF 0204 050 S25 | 12 | 50/40 | Brushed Stainless Steel |
| VF 0204 065 S25 | 14 | 65/55 | Brushed Stainless Steel |

Radi



5001

| Article No | L | H | W | Finish | Comment |
|------------|----|----|----|-------------------------|-------------------------------|
| FA 5001 B | 55 | 36 | 28 | Brushed Stainless Steel | Can be floor or wall mounted. |



5002

| Article No | L | H | W | Finish | Comment |
|------------|----|----|----|-------------------------|-------------------------------|
| FA 5002 B | 60 | 29 | 25 | Brushed Stainless Steel | Can be floor or wall mounted. |



Nova 2
Door Stop 1&2

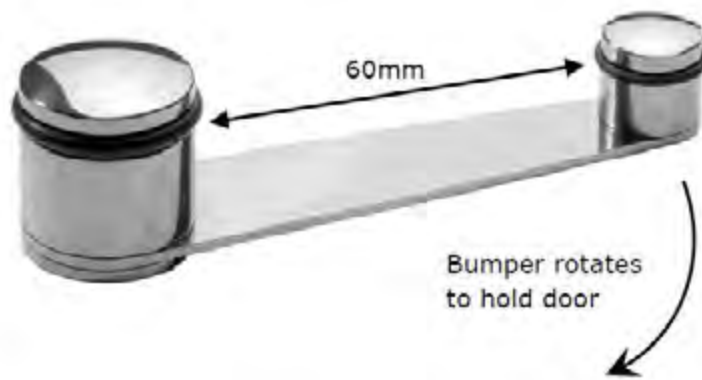
| Article No | ∅ | L | Finish | Comment |
|------------|----|----|--------------------------|---|
| FN 1931 | 28 | 55 | Brushed Stainless Steel | Can be mounted to the floor or on the wall. |
| FO 1931 | 28 | 55 | Polished Stainless Steel | |
| FN 1931-1 | 28 | 75 | Brushed Stainless Steel | |
| FO 1931-1 | 28 | 75 | Polished Stainless Steel | |



| Article No | \varnothing | H | Finish | Comment |
|------------|---------------|----|-------------------------|---------------------|
| DH 91035 | 35 | 50 | Brushed Stainless Steel | Floor mounted only. |



| Article No | \varnothing | L | Finish | Comment |
|------------|---------------|----|-------------------------|--------------------|
| DH 91100 | 25 | 65 | Brushed Stainless Steel | Wall mounted only. |
| DH 91101 | 25 | 95 | Brushed Stainless Steel | |



| Article No | \varnothing | L | H | W | Finish | Comment |
|------------|---------------|-----|-------|----|-------------------------|---------------------|
| DH 91040 | 25/15 | 110 | 30/15 | 25 | Brushed Stainless Steel | Floor mounted only. |



| Article No | ∅ | □ | H | ⊥ | ⊥ | Finish | Comment |
|----------------------|-------|------|-----|---------|----|-----------------|--|
| KAT PW 150 | 32/80 | -- | 150 | -- | -- | Stainless Steel | KAT PW legs are manufactured by Katalog in NZ. They are made from heavy gauge stainless steel and have an adjustable foot. |
| KAT PW 180 | 32/80 | -- | 180 | -- | -- | | |
| KAT PW 300 | 32/80 | -- | 200 | -- | -- | | |
| EZ 8011 (Left Hand) | -- | 50x8 | 109 | 150x100 | | Bright Chrome | |
| EZ 8012 (Right Hand) | -- | 50x8 | 109 | 150x100 | | Bright Chrome | |



| Article No | ∅ | □ | H | ⊥ | ⊥ | Finish | Comment |
|-----------------|-------|-----|-------|---|---|------------------|--|
| EZ 8026 091 | 60x20 | 91 | 80x60 | | | Matt Chrome Look | VF 6005 also available in brushed nickel finish. |
| VF 6005 100 L01 | 60x10 | 100 | 80x60 | | | Polished Chrome | |
| VF 6005 200 L01 | 60x10 | 200 | 80x60 | | | Polished Chrome | |

Jazz & Fonda



Kitchen Rail
&
Rail Extension

| Article No | ∅ | L | H | W | Finish | Comment |
|------------|----|------|----|----|-----------------|--|
| FN 1917-1 | 14 | 1000 | 40 | 28 | Stainless Steel | Rail and rail extensions can be cut to size. |
| FN 1917-2 | 14 | 1000 | 40 | 28 | Stainless Steel | |



Knife Block
&
Shelf

| Article No | L | H | W | Finish | Comment |
|------------|-----|-----|-----|------------------------------|---------|
| FN 1919 | 315 | 230 | 100 | Solid Walnut/Stainless Steel | |
| FN 1918 | 315 | 230 | 160 | Stainless Steel | |



Roll Holder
&
Kitchen Hook

| Article No | L | H | W | Finish | Comment |
|------------|-----|-----|-----|-----------------|---------|
| FN 1921 | 315 | 230 | 200 | Stainless Steel | |
| FN 1907 | 35 | 80 | 4 | Stainless Steel | |



FQ 3012.036.xx



FQ 3012.022.xx



FQ 3012.042.xx

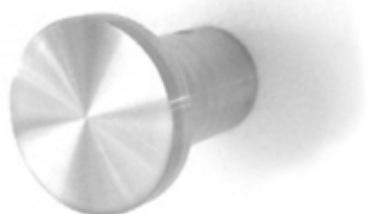
Quadra Hooks

| Article No | L | H | W | Finish |
|----------------|------|----|------|---|
| FQ 3012.022.xx | 22.5 | 36 | 14 | FQ 3012 hooks are available in Brushed nickel (10), Polished (25) Black (75) White (76) |
| FQ 3012.036.xx | 36 | 36 | 22.5 | |
| FQ 3012.042.xx | 42 | 58 | 16 | |



Nova 2 Hooks

| Article No | ∅ | L | H | W | Finish | Comment |
|------------|----|-----|----|----|-------------------|---|
| FN 1901-1 | 16 | -- | 27 | -- | Brushed Stainless | Nova 2 hooks now available in cooper and gold finish. |
| FO 1901-1 | 16 | -- | 27 | -- | Polished Chrome | |
| FN 1901-2 | 25 | -- | 50 | -- | Brushed Stainless | |
| FO 1901-2 | 25 | -- | 50 | -- | Polished Chrome | |
| FN 1902-1 | 25 | 222 | 52 | 40 | Brushed Stainless | |
| FO 1902-1 | 25 | 222 | 52 | 40 | Polished Chrome | |
| FN 1902-2 | 25 | 406 | 52 | 40 | Brushed Stainless | |
| FO 1902-2 | 25 | 406 | 52 | 40 | Polished Chrome | |



Nova Hooks

| Article No | ∅ | L | H | W | Finish | Comment |
|------------|----|-----|----|----|-------------------|---------|
| FN 1124 | 25 | -- | 30 | -- | Brushed Stainless | |
| FO 1124 | 25 | -- | 30 | -- | Polished Chrome | |
| FN 1125 | 25 | 222 | 32 | 40 | Brushed Stainless | |
| FO 1125 | 25 | 222 | 32 | 40 | Polished Chrome | |
| FN 1126 | 25 | 406 | 32 | 40 | Brushed Stainless | |
| FO 1126 | 25 | 406 | 32 | 40 | Polished Chrome | |



Hook 4

| Article No | ∅ | H | Finish | Comment |
|------------|----|----|-------------------------|---------|
| FN 1127 | 16 | 35 | Brushed Stainless Steel | |
| FO 1127 | 16 | 35 | Polished Chrome | |
| FN 1128 | 20 | 60 | Brushed Stainless Steel | |
| FO 1128 | 20 | 60 | Polished Chrome | |



Hook 2

| Article No | ∅ | L | H | W | Finish |
|-----------------------|---|-----|-----|----|-------------------------|
| FN 1132 (5 Hooks) | 8 | 495 | 103 | 91 | Brushed Stainless Steel |
| FO 1132 (5 Hooks) | 8 | 495 | 103 | 91 | Polished Chrome |
| FN 1133 (Single Hook) | 8 | 45 | 103 | 89 | Brushed Stainless Steel |
| FO 1133 (Single Hook) | 8 | 45 | 103 | 89 | Polished Chrome |



Didheya Hooks

| Article No | ∅ | L | H | W | Finish | Comment |
|------------|----|-----|----|----|-------------------------|---------|
| DH 92004 | 20 | 48 | -- | -- | Brushed Stainless Steel | |
| DH 92005 | 25 | 95 | -- | -- | Brushed Stainless Steel | |
| DH 41200 | -- | 100 | 60 | 10 | Brushed Stainless Steel | |



Camouflage

| Article No | L | W | H |
|------------------------|-----|-----|----------|
| FW 3001-X | 400 | 240 | 65 |
| FW 3001-X-3 (Set of 3) | 400 | 240 | 35/55/65 |
| FW 3002-X | 80 | 58 | 24 |
| FW 3002-X-3 (Set of 3) | 80 | 58 | 24 |

Finish

Available Colours: Copper, Gold, Polished, Brushed, BlueSky, Mint, Rose, IceBlue, Black, Plum, White, DarkGreen, Lime, Grey, Yellow.



Lulu

| Article No | ∅ | H | Finish |
|------------|----|----|---|
| FL 1060-X | 60 | 50 | <i>Lulu Colours:</i> Brushed, Copper, Gold, Silver, Black, White. |
| FL 1080-X | 80 | 35 | |

Blossom

| Article No | ∅ | H | Finish |
|------------|----|----|--|
| FB 1055-X | 55 | 65 | <i>Blossom Colours:</i> Lime, Plum, Red, Black, White, Clear, Turquoise. |



| Article No | ∅ | L | H |
|-----------------------|----|------|---------|
| Hook 12 FN 1000 | 16 | -- | 40 |
| Hook 13 FN 1000-1 | 16 | -- | 65 |
| Hall Stand 3 FN 1904 | -- | 1028 | 100/158 |
| Coat Rack 1 FN 1904-1 | -- | 228 | 40/100 |
| Coat Rack 2 FN 1904-2 | -- | 178 | 40/150 |

Finish

Brushed Stainless Steel
 Brushed Stainless Steel
 Brushed Stainless Steel
 Brushed Stainless Steel
 Brushed Stainless Steel

Comment

All these product are also available in polished chrome.



Hall Stand
1&2

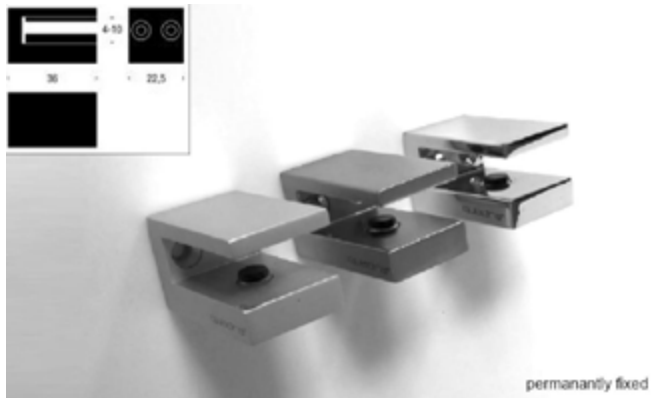
| Article No | ∅ | L | H | Finish | Comment |
|------------|-----|-----|------|-----------------|------------------------------------|
| FN 1176 | 310 | 360 | 1700 | Stainless Steel | Also available in polished chrome. |
| FN 1177 | 100 | 350 | 1700 | Stainless Steel | |



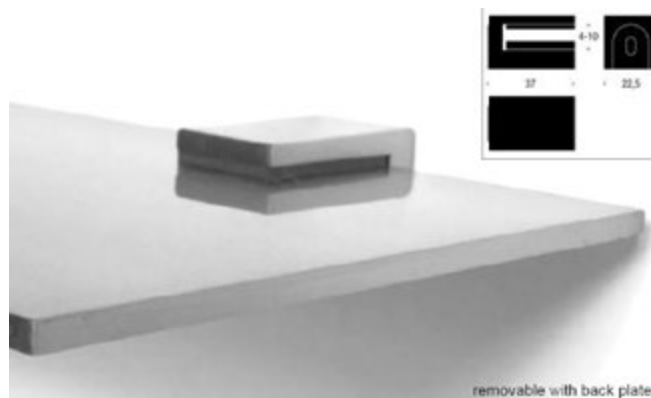
Wishbone
Hall Stand

| Article No | ∅ | H | Finish | Comment |
|------------|-----|------|--------------------|---------|
| FW 1001 | 350 | 1750 | Stainless/Polished | |
| FW 1001-B | 350 | 1750 | Black/Polished | |
| FW 1001-W | 350 | 1750 | White/Polished | |
| FW 1001-G | 350 | 1750 | Lime/Polished | |
| FW 1001-R | 350 | 1750 | Red/Polished | |
| FW 1001-CB | 350 | 1750 | Black/Copper | |
| FW 1001-CW | 350 | 1750 | White/Copper | |

Shelf Clamp 3



Shelf Clamp 4



Shelf Clamp 3&4

| Article No | L | Shelf Thickness | W | Available Finish | Comment |
|----------------|----|-----------------|------|--|---|
| FQ 3003.036.XX | 36 | 4-10 | 22.5 | Stainless Steel (10) Polished Chrome (25) Black (75) White (76) | Shelf Clamp 3 is mounted straight to surface with two screws. |
| FQ 3004.037.XX | 37 | 4-10 | 22.5 | | Shelf Clamp 4 has a backing plate which it slides on to. |

Shelf 4



Shelf 5



| | Article No | L | Shelf Thickness | W | Available Finish | Comment |
|---------|----------------|-----|-----------------|-----|--|---------|
| Shelf 4 | FQ 3032.090.XX | 90 | 4 | 120 | Brushed Stainless (10) Polished Chrome (25) Black (75) White (76) | |
| | FQ 3032.360.XX | 360 | 4 | 120 | | |
| Shelf 5 | FQ 3033.090.XX | 90 | 4 | 120 | | |
| | FQ 3033.360.XX | 360 | 4 | 120 | | |
| | FQ 3033.600.XX | 600 | 4 | 120 | | |

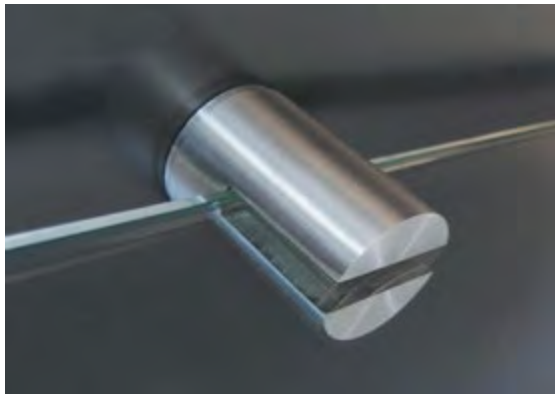
Soap Dish & Cup



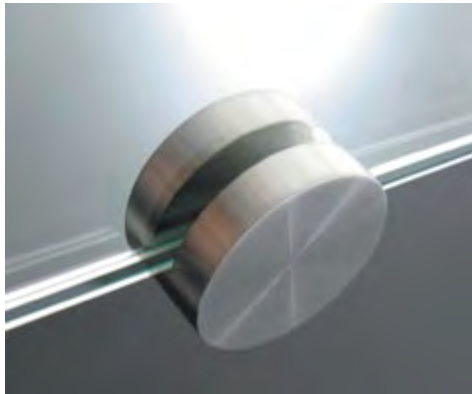
Shelf Clamp 6



| | Article No | L | Shelf Thickness | W | Ø | Finish | Comment |
|-----------------|----------------|-----|-----------------|----|-----|-------------------|---|
| Soap Dish & Cup | FQ 3039.102.45 | 23 | -- | -- | 102 | White Plastic | Soap Dish & Cup are sold separately from self 4. Shelf Clamp 6 also available in Polished Chrome and White. |
| | FQ 3040.063.45 | 123 | -- | -- | 63 | White Plastic | |
| Shelf Clamp 6 | FQ 3046.080.10 | 80 | 10-30 | 24 | -- | Brushed Stainless | |
| | FQ 3046.080.75 | 80 | 10-30 | 24 | -- | Black | |



| | Article No | L | Shelf Thickness | ∅ | Available Finish | Comment |
|-------------------|------------|-----|-----------------|-----|------------------|---|
| Shelf Clamp 5 | FN 1933 | 40 | 4-10 | 28 | Stainless Steel | Shelf clamps sold in pairs. |
| | FO 1933 | 40 | 4-10 | 28 | Polished Chrome | |
| Dish & Cup Holder | FN 1925 | 139 | 4 | 90 | Stainless Steel | Nova Dish and Cup holder includes plastic dish and cup. |
| | FN 1915 | 145 | 4 | 102 | Stainless Steel | |



| | Article No | L | Mirror Thickness | W | H | ∅ | Available Finish | Comment |
|-------------------|----------------|----|------------------|----|----|----|--|---------|
| Mirror Holder 1&3 | FN 1120A | 22 | 3-6 | -- | -- | 25 | Brushed Stainless | |
| | FO 1120A | 22 | 3-6 | -- | -- | 25 | Polished Chrome | |
| | FN 1932 | 33 | 3-6 | -- | -- | 28 | Brushed Stainless | |
| | FO 1932 | 33 | 3-6 | -- | -- | 28 | Polished Chrome | |
| Mirror Holder 4&5 | FQ 3021.014.XX | 23 | 3-6 | 14 | -- | -- | Brushed Stainless (10) | |
| | FQ 3022.022.XX | 23 | 3-6 | 22 | -- | -- | Polished Chrome (25) Black (75) White (76) | |



| | Article No | L | H | ∅ | Finish | Comment |
|---------------|------------|-----|-----|-----|-------------------|---------|
| Nova 2 Mirror | FN 1942 | 248 | 208 | 162 | Brushed Stainless | |
| | FO 1942 | 248 | 208 | 162 | Polished Chrome | |
| | FN 1943 | -- | 287 | 162 | Brushed Stainless | |
| | FO 1943 | -- | 287 | 162 | Polished Chrome | |



Soap Shelf 1 (FN1937)



Soap Shelf 2 corner (FN1938)

| Soap Shelf 1 & 2 | Article No | L | H | D | Finish | Comment |
|---------------------|------------|-----|----|-----|-----------------|---------|
| | | mm | mm | mm | | |
| | FN 1937 | 200 | 48 | 120 | Stainless Steel | |
| | FO 1937 | 200 | 48 | 120 | Polished Chrome | |
| | FN 1938 | 200 | 48 | 120 | Stainless Steel | |
| | FO 1938 | 200 | 48 | 120 | Stainless Steel | |

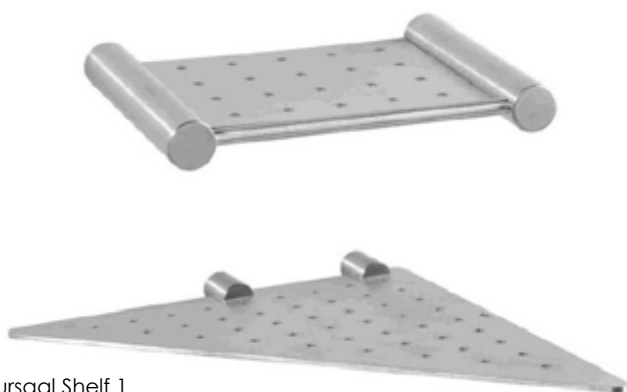


Soap Shelf 4 (FN1937)



Soap Shelf 3 corner (FN1941)

| Soap Shelf 3 & 4 | Article No | L | H | D | Finish | Comment |
|---------------------|------------|-----|----|-----|-------------------|---------|
| | | mm | mm | mm | | |
| | FN 1937-1 | 360 | 48 | 120 | Brushed Stainless | |
| | FO 1937-1 | 360 | 48 | 120 | Polished Chrome | |
| | FN 1941 | 250 | 48 | 185 | Brushed Stainless | |
| | FO 1941 | 250 | 48 | 185 | Polished Chrome | |



Kursaal Shelf 1



Big Shelf 2

| Kursaal Shelf | Article No | L | Shelf Thickness | D | Ø | Finish | Comment |
|---------------|------------|-----|-----------------|-----|----|-------------------|---------|
| | | mm | mm | mm | mm | | |
| | DH 40052 | 187 | 1.5 | 100 | 18 | Brushed Stainless | |
| | DH 40053 | 336 | 1.5 | 100 | 18 | Brushed Stainless | |
| | DH 40055 | 238 | 2.5 | 238 | 18 | Brushed Stainless | |
| Big Shelf | DH 41211 | 600 | 40 | 150 | -- | Stainless/Glass | |



UNU coat Rack

UNU
Coat Rack

| Article No | L | H | D | ∅ |
|------------|-----|-----|-----|----|
| FU 4016 B | 200 | 145 | 300 | -- |
| FU 4016 W | 200 | 145 | 300 | -- |
| FU 4003 B | 600 | 145 | 300 | -- |
| FU 4003 W | 600 | 145 | 300 | -- |



Nova 2 Shoe shelf

Nova 2
Shoe Shelf

| Article No | L | H | D | ∅ | Finish | Comment |
|------------|------|-----|-----|---|-------------------|--|
| FN 1929 | 600 | 250 | 300 | | Brushed Stainless | Shoe Shelf also available in polished chrome finish. |
| FN 1929-1 | 1000 | 250 | | | Brushed Stainless | |



Quadra Shelf 8

Quadra
Shelf 8

| Article No | L | H | D | ∅ |
|----------------|-----|----|-----|---|
| FQ 3042.600.10 | 625 | 36 | 305 | |
| FQ 3042.600.25 | 625 | 36 | 305 | |
| FQ 3042.600.75 | 625 | 36 | 305 | |
| FQ 3043.600.76 | 625 | 36 | 305 | |



Nova 2 Shelf 1 & 2

Nova 2
Shelf 1 & 2

| Article No | L | H | D | ∅ | Finish | Comment |
|------------|------|-----|-----|---|-------------------|---------|
| FN 1936 | 625 | 115 | 300 | | Brushed Stainless | |
| FO 1936 | 625 | 115 | 300 | | Polished Chrome | |
| FN 1936-1 | 1025 | 115 | 300 | | Brushed Stainless | |
| FO 1936-1 | 1025 | 115 | 300 | | Polished Chrome | |



Rada
Shoe shelf

| Article No | L | H | D | ∅ | Finish |
|------------|------|-----|-----|---|------------------------|
| FW5001 | 600 | 120 | 164 | | Black / white / chrome |
| FW5002 | 1000 | 120 | 164 | | Black / white / chrome |



Quadra
Towel Bars

| Article No | L | H | D | Ø | Finish | Comment |
|----------------|-----|----|-----|----|-----------------|---|
| FQ 3016.600.10 | 628 | 36 | 65 | 12 | Brushed | Quadra towel bars are also available in black and white finish. |
| FQ 3016.600.25 | 628 | 36 | 65 | 12 | Polished Chrome | |
| FQ 3017.600.10 | 628 | 36 | 105 | 12 | Brushed | |
| FQ 3017.600.25 | 628 | 36 | 105 | 12 | Polished Chrome | |



Nova 2
Towel Bars

| Article No | L | H | D | Ø | Finish | Comment |
|------------|-----|----|-----|----|-------------------|--|
| FN 1916-1 | 628 | 36 | 65 | 12 | Brushed Stainless | Nova 2 towel bars are also available in polished chrome. FN 1916-1 available in gold and copper. |
| FN 1916-2 | 628 | 36 | 65 | 12 | Brushed Stainless | |
| FN 1916-3 | 828 | 36 | 105 | 12 | Brushed Stainless | |
| FN 1916-4 | 828 | 36 | 105 | 12 | Brushed Stainless | |



Nova
Towel Bars

| Article No | L | H | D | Ø | Finish | Comment |
|------------|-----|----|----|-------|-------------------|---------|
| FN 1104 | 618 | 18 | 53 | 12/18 | Brushed Stainless | |
| FO 1104 | 618 | 18 | 53 | 12/18 | Polished Chrome | |



Didheya
Towel Rail

| Article No | L | H | D | Finish | Comment |
|------------|-----|----|-----|-------------------|---------|
| DH 41205 | 400 | 40 | 100 | Brushed Stainless | |
| DH 41207 | 600 | 40 | 100 | Brushed Stainless | |



Nova
Towel Rack

| Article No | L | H | D | ∅ | Finish | Comment |
|------------|-----|----|----|-------|-------------------|---------|
| FN 1914 | 458 | 87 | 55 | 14/45 | Brushed Stainless | |
| FO 1914 | 458 | 87 | 55 | 14/45 | Polished Chrome | |



Nova
Towel Bars

| | | | | | | |
|---------|-----|----|----|-------|-------------------|--|
| FN 1118 | 500 | 45 | 53 | 16/45 | Brushed Stainless | |
|---------|-----|----|----|-------|-------------------|--|



Didheya
Towel Holder

| Article No | L | H | D | Finish | Comment |
|------------|-----|-----|-----|-------------------|---------|
| DH 40061 | 213 | 102 | 93 | Brushed Stainless | |
| DH 40062 | 390 | 102 | 93 | Brushed Stainless | |
| DH 41210 | 160 | 160 | 100 | Brushed Stainless | |





Nova 2
Roll Holder

| Article No | L | H | D | Finish | Comment |
|------------|-----|-----|----|-------------------|--|
| FN 1909 | 145 | 111 | 40 | Brushed Stainless | Nova 2 roll holder also available in gold and copper |
| FO 1909 | 145 | 111 | 40 | Polished Chrome | |

Nova 2
Spare roll Holder

| | | | | | |
|---------|-----|----|----|--------------------|--|
| FN 1912 | 119 | 68 | 75 | Brushed Stainless | |
| FO 1912 | 119 | 68 | 75 | Polished Stainless | |

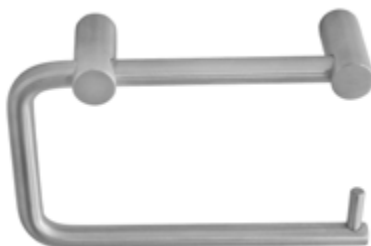


Quadra
Roll Holder

| Article No | L | H | D | Finish | Comment |
|----------------|-----|-----|----|------------------------|---------|
| FQ 3014.145.10 | 145 | 100 | 36 | Brushed Stainless look | |
| FQ 3014.145.25 | 145 | 100 | 36 | Polished Chrome | |
| FQ 3014.145.75 | 145 | 100 | 36 | Black | |
| FQ 3014.145.76 | 145 | 100 | 36 | White | |

Quadra
Spare roll Holder

| | | | | | |
|----------------|-----|----|----|------------------------|--|
| FQ 3015.160.XX | 120 | 60 | 75 | Brushed Stainless look | |
| | | | | Polished Chrome | |
| | | | | Black | |
| | | | | White | |



KAT
Roll Holder

| Article No | L | H | D | ∅ | Finish | Comment |
|-----------------|-----|----|----|----|--------------------|---------|
| KAT Roll Holder | 150 | 32 | -- | 19 | Brushed Stainless | |
| FN 1912 | 119 | 68 | 75 | -- | Brushed Stainless | |
| FO 1912 | 119 | 68 | 75 | -- | Polished Stainless | |
| FQ 3015.160.45 | 120 | 60 | 75 | -- | Aluminium | |

Nova
Roll Holder

| | | | | | | |
|---------|-----|----|----|--|-------------------|--|
| FN 1101 | 141 | 88 | 40 | | Brushed Stainless | |
| FO 1101 | 141 | 88 | 40 | | Polished Chrome | |

Didheya
Roll Holder

| | | | | | | |
|----------|-----|----|-----|--|-------------------|--|
| DH 41201 | 140 | 40 | 100 | | Brushed Stainless | |
|----------|-----|----|-----|--|-------------------|--|



| | Article No | H mm | D mm | Ø mm | Finish | Comment |
|------------------------------|-----------------|---------|---------|---------|-----------------|--|
| Nova 2 Toilet Brush | FN 1910 (Floor) | 415 | - | 89 | Stainless Steel | Nova 2 toilet brush (wall) available in gold and copper. Nova 2 toilet brush (floor) available in gold. |
| | FO 1910 (Floor) | 415 | - | 89 | Polished Chrome | |
| | FN 1911 (Wall) | 415 | 127.5 | 89 | Stainless Steel | |
| | FO 1911 (Wall) | 415 | 127.5 | 89 | Polished Chrome | |
| Nova Toilet Brush | FN 1106 | 400 | 108.5 | 102 | Stainless Steel | Replaceable brush |
| | FO 1106 | 400 | 108.5 | 102 | Polished Chrome | |
| Nova 2 combi Toilet Brush | FN 1948 | 715 | - | 200 | | |



| | Article No | H mm | D mm | Ø mm | Finish |
|-------------------------------|---------------------|---------|---------|---------|---------------------------------------|
| Quadra Round Toilet Brush | FQ 3022.365 (Floor) | 365 | 127.5 | 89 | Brushed, Polished, Black and White |
| | FQ 3023.365 (Wall) | 365 | 127.5 | 89 | |
| Quadra square Toilet Brush | FQ 3025.387 (Floor) | 387 | 115 | 90 | Brushed, Polished, Black and White |
| | FQ 3026.386 (Wall) | 387 | 115 | 90 | |



Nova 2
Soap Dispenser

| Article No | H | D | W | Ø | Finish | Comment |
|------------|-----|-----|----|----|-----------------|--|
| FN 1939 | 188 | 100 | -- | 60 | Stainless Steel | Nova 2 soap dispenser available in gold and copper finish. |
| FO 1939 | 188 | 100 | -- | 60 | Polished Chrome | |

Quadra
Soap Dispenser

| | | | | | | |
|----------------|-----|-----|----|----|----------------------|--|
| FQ 3045.196.10 | 196 | 100 | 60 | -- | Stainless Steel (10) | |
| FQ 3045.196.25 | 196 | 100 | 60 | -- | Polished Chrome (25) | |
| FQ 3045.196.75 | 196 | 100 | 60 | -- | Black (75) | |
| FQ 3045.196.76 | 196 | 100 | 60 | -- | White (76) | |



Nova 2
Paper Dispenser
Waste Bin

| Article No | L | H | W | Finish | Comment |
|------------|-----|-----|-----|-------------------------|--|
| FN 1944 | 300 | 325 | 110 | Brushed Stainless Steel | Also available in Polished, Black, White, Gold and Copper. |
| FN 1945 | 300 | 400 | 150 | Brushed Stainless Steel | |